



LONDON
METROPOLITAN
UNIVERSITY

Open day

Saturday 22 August
11am – 2pm

#MetOpenEvents

londonmet.ac.uk

[f/londonmetuni](https://www.facebook.com/londonmetuni)

[@LondonMetUni](https://twitter.com/LondonMetUni)

[@LondonMetUni](https://www.instagram.com/LondonMetUni)

Contents

02–04

About the day

Arrival and check-in
Help desk
Emergencies
Information fair
Accommodation and tours
Talks, workshops and demonstrations
Student ambassadors
Student life lounge
Admissions
Refreshments
Feedback
Campus tours

05

Investing in your future

Shaping your career
Urban locations
First-rate teaching
Vibrant and diverse
Investment in facilities

06–07

Are you on Twitter?

Get involved online using #MetOpenEvents

08–19

Subject information sessions schedule

Faculty of Life Sciences and Computing
Faculty of Social Sciences and Humanities
Guildhall Faculty of Business and Law
The Cass: The Sir John Cass Faculty of Art, Architecture and Design

20–21

Upcoming events at London Met

August to November 2015

24–25

News

Accelerator named in European top five
Enterprise shines at Big Idea Challenge awards
Campus art competition
London Met graduate to tour UK with debut play
Recognised staff

Welcome to London Metropolitan University's undergraduate open day

We are delighted that you are interested in studying at London Metropolitan University.

London Met will provide you with an industry-enabled quality education in one of the world's most exciting cities.

This open day is an opportunity to discover what London Met has to offer you. As well as tours of our facilities, we have information on getting the best value accommodation and options for funding your studies.

Lecturers will be on hand to discuss courses, and students and graduates will also be available to talk about life at London Met.

We hope you find the open day informative and enjoyable.



Professor John Raftery
Vice-Chancellor



About the day

Arrival and check-in

When you arrive at the open day please check-in or register at the welcome desk.

Help desk

If you have any questions relating to the open event, then please visit the help desk.

Emergencies

If the fire alarm sounds please leave the building immediately and follow the directions given by the fire marshals and student ambassadors. First aid assistance can be obtained at the help desk.



Information fair

At the information fair you can meet academics and learn more about your course. There will be stands on accommodation, admissions, learning support and various other student services.

Location: Great Hall

Accommodation and tours

Visit the accommodation zone to find out about various housing options. A number of external accommodation providers will be around to discuss residential options available in the local area. You can also book a tour of our accommodation providers' halls of residence at the accommodation desk.

Time: 11am to 2.30pm (tours take place approximately every 20 minutes)



Talks, workshops and demonstrations

Please refer to your subject page within the guide for locations and times.

Welcome to London Met!

A talk welcoming you to the university.

Preparing for university: what you need to know about student funding

Find out how best to fund your studies and what bursaries are available.

London Met student life – student panel

A panel of London Met's current students and graduates answer your questions on studying at London Met.

Navigating the UCAS application process

Learn about the UCAS application process for full-time study.

Developing personal statements

Learn how to develop the perfect personal statement. We'll also share some top tips with you.

Personal statement clinic

Drop in and receive one-to-one help and advice on developing your personal statement. If you've already started, why not bring it in? Our team are happy to help.

Make London Met work for you! – careers and employability

Learn how London Met will ensure your employability.





Student ambassadors

If you have any questions or want to discover more about student life at London Met, our student ambassadors are wearing black and white t-shirts and are here to help you.

Student life zone

We want you to have the best experience possible, so pop over to our student life lounge to discover the fun stuff you can do around your studies.

Location: Great Hall

Admissions

Our admissions team are available at the admissions desk, and are able to offer advice on our courses and your application.

Location: Great Hall



Refreshments

Refreshments are available upon arrival. You will find a refreshment voucher within your welcome pack which you can redeem at our food outlets. A variety of snacks are available to purchase.

Feedback

Watch out for our online feedback survey that will hit your inbox just after the event. We are continually looking to improve our open events so your feedback is very important to us. You could also win an iPad!



Campus tours

Our student ambassadors will take you on a tour of London Met's campus. You will see all the facilities and other support services on campus. There's no need to book, just turn up at the campus tours' desk.

Time: 11am to 2.40pm (tours take place approximately every 20 minutes)



Scan this QR code to find out more about our open days or visit: londonmet.ac.uk/opendays



Shaping your career

Over the last two years, London Met has trained:

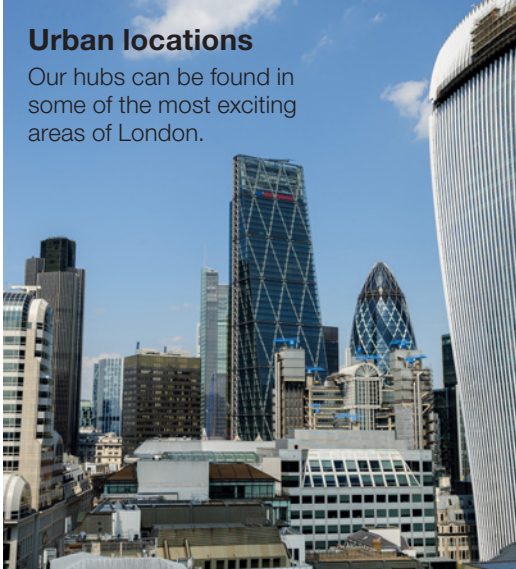
- Over 590 lawyers
- Over 430 social workers and health professionals
- Over 600 architects
- Over 430 teachers
- Over 450 technologists
- Over 880 scientists



First-rate teaching

We are one of the top ten Universities nationally for class contact time.

You will be inspired by an international body of lecturers actively engaged with world-class research.



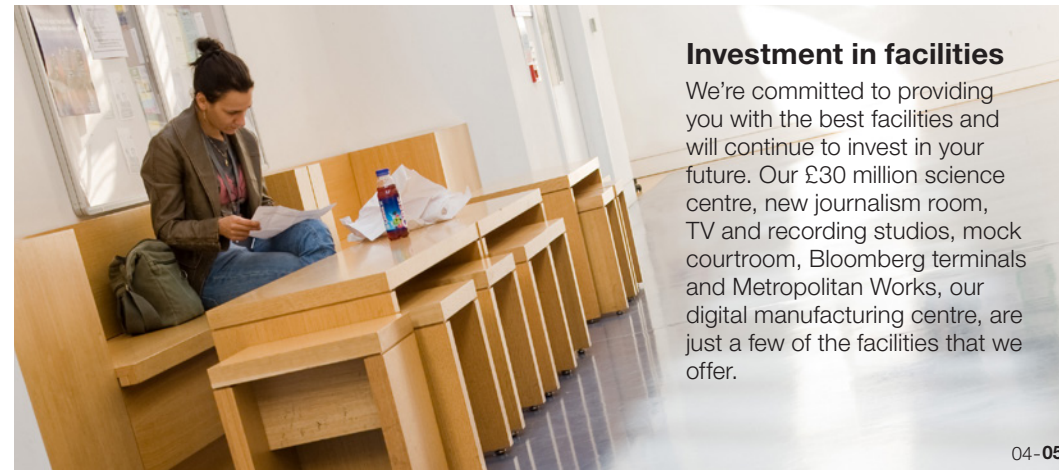
Urban locations

Our hubs can be found in some of the most exciting areas of London.



Vibrant and diverse

We are proud of our multi-ethnic and socially diverse community and encourage you to join us, regardless of age or background.

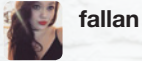


Investment in facilities

We're committed to providing you with the best facilities and will continue to invest in your future. Our £30 million science centre, new journalism room, TV and recording studios, mock courtroom, Bloomberg terminals and Metropolitan Works, our digital manufacturing centre, are just a few of the facilities that we offer.

#MetOpenEvents

Get involved!



fallan

Well @LondonMetUni was definitely worth the nearly 12 hours of travelling today!



Paz.

The #MetOpenDay at @LondonMetUni was amazing to see where my future will be! Can't wait till September now!



Ezzah Kashish

@LondonMetUni Oh god help me to join met university



Melda

It's been such a fantastic day at London Met – had so much fun! #MetOpenDay @LondonMetUni



KIERAN.

Great day at the #UCASConvention at Alexander Palace – Shiv and I at #MetOpenEvents



Susan Cook

Applicants from across the world at #MetOpenEvents with @LondonMetUni interested in @socialsciences!! Europe, USA, Sunderland & London!



Barbara

Happy to have given my own experience and lessons on being a first year @LondonMetUni #MetOpenDay



Ashley Saville

Had such a great time and so helpful thanks @LondonMetUni #MetOpenDay.



Paul Acheampong

@LondonMetUni Afternoon London Met Uni team, hope you're having a good bank holiday, I'm looking forward to studying at the university soon.



Thuggy Burbants

Super excited to go to @LondonMetUni's mini open day on Wednesday! #dietetics #nutrition



E

#MetOpenDay having a brilliant time at @LondonMetUni

Plan your day

To get the most out of your visit, plan your day so you don't miss out!

ACTIVITY	10.45am	11am	11.15am	11.30am	11.45am	12pm	12.15pm	12.30pm	12.45pm	1pm	1.15pm	1.30pm	1.45pm	2pm
Campus tour														
Accommodation tour														
E.g. Welcome to London Met!														
E.g. Interested subject														
E.g. Interested subject														
E.g. London Met student life – student panel														

Subject and information sessions schedule

	10.45am	11am	11.15am	11.30am	11.45am	12pm	12.15pm	12.30pm	12.45pm	1pm	1.15pm	1.30pm	1.45pm	2pm
Subject areas of interest	Times and locations													
Information fair	The Great Hall and The Rocket													
Welcome to London Met			BPLG-02						BPLG-02					
Essential guide to student funding					The Great Hall Mezzanine						The Great Hall Mezzanine			
Making London Met work for you!	BPLG-02								BPLG-02					
London Met student life – Student panel						BPLG-02								
Navigating UCAS					Application Zone – Great Hall					Application Zone – Great Hall				
Preparing a personal statement								The Great Hall Mezzanine				The Great Hall Mezzanine		

Faculty of Life Sciences and Computing

subject and information sessions schedule

	10.45am	11am	11.15am	11.30am	11.45am	12pm	12.15pm	12.30pm	12.45pm	1pm	1.15pm	1.30pm	1.45pm	2pm
Welcome to the Faculty of Life Sciences and Computing														
Life Sciences and Computing – School of Computing														
Applied Computing (Business Information Technology, IT Security) – Business Information Technology / Computer Forensics and IT Security / Computer Networking and IT Security / Business Computer Systems (Top-Up)						The Rocket reception – escorted to T8-03								
Communications Technology (Networking, Electronics and Telecommunications) – Computer Systems Engineering / Computer Networking / Network Management and Security / Electronic and Communications Engineering / Telecommunications and Network Engineering								The Rocket reception – escorted to T8-01						
Computer Science and Creative Technologies (Programming, Software, Animation and Games Modelling) – Computer Science / Computing / Software Engineering (Top-up) / Computer Games Programming / Games Modelling, Animation and Effects / Computing, Technology and Mathematics Extended Degree								The Rocket reception – escorted to T7-20b						
Mathematics – Mathematics / Mathematics and Statistics / Mathematics and Computer Science / Financial Mathematics / Mathematical Sciences						The Rocket reception – escorted to T7-06								
Life Sciences and Computing – School of Human Sciences														
Dietetics and Nutrition – Dietetics and Nutrition / Human Nutrition						The Rocket reception – escorted to the Science Centre, Nutrition Clinic, SCG								
Life Sciences (Biosciences, Molecular Sciences, Pharmaceutical Science and Pharmacology) – Applied Biomedical Science / Biochemistry / Biological Sciences / Sciences Extended Degree / Biotechnology / Forensic Science / Medical Bioscience / Biomedical Sciences / Chemistry / Pharmaceutical Science / Pharmacology								TMG-45 Science Centre Tour						
Sport Science and Therapy – Sport Psychology and Coaching / Sports and Dance Therapy / Sports Science / Sports Science and Physical Education / Sports Therapy						The Rocket reception – escorted to the Science Centre, SC1-17								
Life Sciences and Computing – School of Psychology														
Psychology – Psychology / Psychology and Sociology								BPLG-01						

Faculty of Social Sciences and Humanities

subject and information sessions schedule

	10.45am	11am	11.15am	11.30am	11.45am	12pm	12.15pm	12.30pm	12.45pm	1pm	1.15pm	1.30pm	1.45pm	2pm
Welcome to the Faculty of Social Sciences and Humanities														
Community and Youth – Community Development and Leadership / Youth Studies / Youth Work						BR2-03								
Creative Writing and English Literature – Creative Writing / Creative Writing and English Literature / English Literature						BR2-05								
Criminology, Sociology, and Social Policy – Criminology / Criminology and Law / Criminology and Policing / Criminology and Psychology / Criminology and Sociology / Criminology and Youth Studies / Police Studies, Procedure and Investigation / Social Science / Sociology / Sociology and Social Policy										BR2-04				
Education – Education and Social Policy / Education Studies / Education Studies and English Literature / Early Childhood Studies / Early Childhood Studies (with Recommendation for Early Years Teacher Status)										BR2-05				
Health and Social Care – Health and Social Care / Health and Social Policy										BR2-07				
International Relations and Governance – International Relations / International Relations and Law / International Relations and Politics / International Relations, Peace and Conflict Studies / Diplomacy and International Relations / Diplomacy and Law / Politics						BR2-06								
Media, Journalism and Film – Journalism / Journalism and Digital Media / Journalism, Film and Television Studies / Fashion Marketing and Journalism / Film and Television Studies / Digital Media						News Room, BP2-25								
Theatre and Performance Practice				Drop into the Information Fair at anytime										
Translation				Drop into the Information Fair at anytime										

Guildhall Faculty of Business and Law

subject and information sessions schedule

	10.45am	11am	11.15am	11.30am	11.45am	12pm	12.15pm	12.30pm	12.45pm	1pm	1.15pm	1.30pm	1.45pm	2pm
Welcome to the Guildhall Faculty of Business and Law														
Accounting, Banking, Finance and Economics – Accounting and Finance / Banking and Finance / Business Economics / Economics / Economics and Finance						BR1-07								
Business Management – Airline, Airport and Aviation Management / International Business Management / Business Management and Marketing / Business Management / Business Management Extended degree / Transport and Logistics Management / Events Management / Tourism and Travel Management / Human Resource Management								BEL1-02						
Fashion Retail Management / Fashion Marketing and Business Management						BEL1-03								
Sports Business Management / Music Business and Live Entertainment						BR1-06								
Law – Law / LLB Business Law LLB Hons / LLB Law (with International Relations) LLB Hons / LLB Law LLB (Hons)						BEL1-09								
Marketing – Marketing and Communications								BR1-05						

The Cass: The Sir John Cass Faculty of Art, Architecture and Design

subject and information sessions schedule

	10.45am	11am	11.15am	11.30am	11.45am	12pm	12.15pm	12.30pm	12.45pm	1pm	1.15pm	1.30pm	1.45pm	2pm
Welcome to The Cass: The Sir John Cass Faculty of Art, Architecture and Design														
Cass Architecture – Architecture / Architecture and Interior Design Extended Degree						BP2-22				BP2-22				
Cass Fine Art – Fine Art / Art and Design Extended Degree / Photography						BP2-22				BP2-22				
Cass 3D – Furniture / Furniture Design / Product Design / Fashion, Textiles, Jewellery, Product and Furniture Extended Degree						BP2-22				BP2-22				
Cass Fashion and Textiles – Fashion / Fashion and Textiles / Textile Design / Fashion, Textiles, Jewellery, Product and Furniture Extended Degree						BP2-22				BP2-22				
Cass Film – Animation / Film and Broadcast Production / Film, Media and Music Extended Degree						BP2-22				BP2-22				
Cass Visual Communications – Graphic Design / Illustration						BP2-22				BP2-22				
Cass Interiors – Interior Architecture and Design / Interior Design / Interior Design and Decoration						BP2-22				BP2-22				
Cass Music – Music Technology: Audio Systems / Sound for Media / Music Production / Musical Instruments / Film, Media and Music Extended degree						BP2-22				BP2-22				
Cass Jewellery – Jewellery and Silversmithing						BP2-22				BP2-22				

Upcoming events at London Met

Go to londonmet.ac.uk/events for more information and to book your place

Aug to Sept	Campus tours	
	Holloway Road / Moorgate / Central House	Daily

Aug	Clearing mini open sessions	
	Holloway Road	1pm – 4.30pm

Aug	Huguenots exhibition	
	Central House	The Cass

15 Aug	Undergraduate open day	
	Holloway Road	11am – 2pm

19 Aug	Professional development open evening	
	Moorgate Building	5pm – 7pm

20 Aug	Undergraduate and postgraduate open evening	
	Moorgate	4pm – 7pm

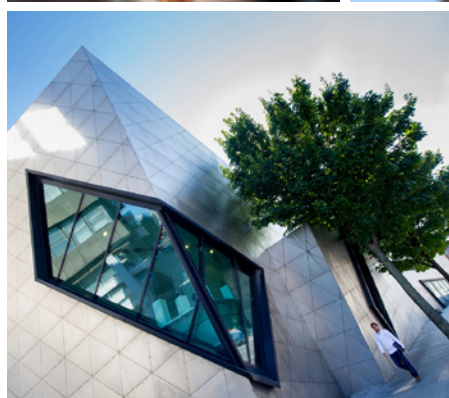
22 Aug	Schools and colleges progression day	
	Holloway Road	11am – 2pm





9 Sept	Postgraduate application and open evening	
	Holloway Road	5pm – 7pm

9 Oct	The International Festival of Dyslexic Culture 2015	
	Holloway Road	9.30am – 4pm

17 Oct	Open top London bus tour of the city	
	Moorgate	Guildhall Business and Law

19 Nov	Afternoon tea with the Dean	
	Moorgate	3pm – 6pm Guildhall Business and Law



 /londonmetuni
 @LondonMetUni
 @LondonMetUni
 /LondonMetUniversity

London Metropolitan University
020 7133 4200
admissions@londonmet.ac.uk