



LONDON  
METROPOLITAN  
UNIVERSITY

# Postgraduate Course Guide 2022/23

# Welcome from our Vice-Chancellor

Named as one of London's most influential people in the *Evening Standard's* Progress 1000 list for her contribution to advancing social equality is our very own Vice-Chancellor **Lynn Dobbs**. Her vision for London Met? To give more back to our city by focusing on real-world problems and striving for social inclusion, equality and diversity to ensure equal opportunities for all.



**Education is a powerful driver of social equality.** I became Vice-Chancellor of London Metropolitan University because I wanted to belong to an institution that shared my passion for creating a fairer society for all. Our Centre for Equity and Inclusion, which recently celebrated its first anniversary, is already making important progress in its work to achieve a lasting and meaningful transformation at London Met and across the higher education sector.

**Our focus on community is more important than ever.** The Covid-19 pandemic has highlighted the inequalities in society, which makes the work we do with our local partners even more critical. We established the London Met Lab: Empowering London to coordinate our contributions to tackling the social challenges which disproportionately affect the communities that we serve.

**Our six-year strategy was launched in 2019 and places the growth, success and wellbeing of our students and staff at its heart.** Protecting our community has been at the heart of every decision we've made since the start of the pandemic. I was

so proud of how quickly we established high-quality remote delivery of teaching to give our students the best possible chance of success. Our community-first approach helped us receive student satisfaction scores well above the UK average in the recent National Student Survey.

**London Met never stands still.** In 2021, we introduced an innovative partnership agreement with our students which will see us co-produce every aspect of our University together. It's a fundamental change that is supported by our whole community and an important milestone in our development.

**We're planning for the future.** Later this year, new courses, such as Nursing, and The Built Environment, will help us provide London with the skilled professionals it needs to continue to thrive. We're also looking at what we've learned from the pandemic and exploring new, more flexible and technology enabled ways of delivering courses.

Thank you for your interest in London Met. I look forward to welcoming you to our dynamic, inclusive and vibrant community.



We have two campuses – one on the bustling Holloway Road in Islington, north London, and the other in Aldgate, east London, home to our art, architecture and design courses.

# Contents

<b>Why London Met?</b>	4
<b>Courses</b>	
Guildhall School of Business and Law	6
School of Art, Architecture and Design	8
School of Computing and Digital Media	10
School of Human Sciences	12
School of Social Sciences and Professions	14
<b>Research and knowledge exchange</b>	16
Research degrees	18
<b>Facilities and services</b>	20
<b>Student support</b>	26
<b>London life</b>	28
<b>Life after London Met</b>	32
<b>Student life</b>	35
<b>Fees and funding</b>	36
<b>How to apply</b>	38

**Left**  
The Clocktower entrance  
on Holloway Road



## Visit us

Joining us either in person or online for one of our open events is an excellent way to:

- discover where you'll be studying
- meet staff and students
- have questions about your course answered
- find out about our support services
- get information about fees and funding
- attend subject taster sessions or interactive workshops
- network with like-minded individuals

[londonmet.ac.uk/opendays](https://londonmet.ac.uk/opendays)

# Why London Met?

Whatever you want to do, we're here to take you – and help you – on that journey.



Our business incubator **Accelerator** supports companies that have generated a combined revenue of **£21 million** in a single year

# 4<sup>th</sup>

in London for overall student satisfaction  
(National Student Survey 2021)



Many of our graduates are working for top employers, including Arsenal Football Club, Bank of England, BBC, EY, Google, GlaxoSmithKline, Ministry of Justice, Tesla and the United Nations

We couldn't be better situated – we're based in one of the world's most diverse and exciting capital cities, brimming with successful global businesses and cutting-edge start-ups

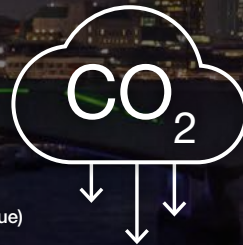
## London is ranked the best city in the world for university students

(QS Best Student Cities Ranking 2022)

We have cut carbon emissions by

# 80%

since 2005  
(People & Planet's University League)



Our alumni include:

Mayor of London **Sadiq Khan**  
comedian **Vic Reeves**  
campaigner **Nicola Sharp-Jeffs OBE**  
designer **Yinka Ilori**  
Cobra Beer founder **Lord Bilimoria**

We work with

# 600+

partnership organisations through our London Met Lab scheme

# 6<sup>th</sup>

in the UK for teaching  
(The Times/The Sunday Times Good University Guide 2022)

"Some of my fondest memories, as someone who was born and raised in London, date back to my years as a student at the University of North London, now known as London Metropolitan University."

**Sadiq Khan** – Mayor of London and Law LLB graduate

# Guildhall School of Business and Law



Our practice-focused and intellectually stimulating business, management, law, finance, and specialist languages courses will equip you with the knowledge and capabilities required to accelerate your professional career. We also have specialist programmes for those who want to pursue careers in the aviation, banking, events, fashion, music and tourism industries.

#### Acquire the skills for a successful career.

Our graduates have gone on to work for organisations such as Adidas, Asos, Deloitte UK, J.P. Morgan, PricewaterhouseCoopers, London City Hall, the Serious Fraud Office, The Coca-Cola Company, Google, Thomson Reuters, the Law Society, Whistles and the Ministry of Justice.

**Gain professional accreditation.** Many of our courses are accredited by leading professional bodies, including the Chartered Institute of Marketing, the Chartered Management Institute, the Association of British Professional Conference Organisers and the Solicitors Regulation Authority.

**Access to world-class facilities.** Our mock courtroom, interpreting suite and Bloomberg financial data room are all equipped with industry-standard equipment.

**Tunde Okewale studied law at London Met and now works as an international human rights barrister. He was awarded an MBE in 2016 for services to the community and disadvantaged young people.**

## Courses

Airline and Airport Corporate Management MSc	Ⓝ
Anti-Bribery and Anti-Corruption Law and Compliance Adv Dip Pro Dev	
Conference Interpreting MA	
Corporate Social Responsibility and Sustainability Adv Dip Pro Dev	
Corporate Social Responsibility and Sustainability MSc	Ⓝ
Culture, Heritage and Leisure Management MSc/PG Dip/PG Cert	
Doctor of Business Administration	
Employment Law and Practice Adv Dip Pro Dev	
English Language Teaching (Distance Learning) MA	Ⓝ
Fashion Marketing and Management MA/PG Dip/PG Cert	Ⓝ
Financial Services Law, Regulation and Compliance LLM/PG Dip/PG Cert	Ⓝ
Human Resource Management MA	Ⓝ
Human Resource Management PG Dip	
Human Rights Law LLM/PG Dip/PG Cert	
International Accounting and Finance MSc	Ⓝ
International Banking and Finance MSc	Ⓝ
International Business Management MSc	Ⓝ
International Business Management with Project Management MSc	Ⓝ
International Events, Leisure and Tourism Management MSc	Ⓝ
International Trade and Finance MSc	Ⓝ
Interpreting MA	
Law: Common Professional Exam GDL	
Legal Practice Course PG Dip	
Legal Practice LLM	Ⓝ
Maritime Law LLM/PG Dip/PG Cert	Ⓝ Ⓝ Ⓝ
Marketing MA	Ⓝ
Master of Business Administration MBA	Ⓝ
Media Law LLM/PG Dip/PG Cert	Ⓝ
Professional Legal Practice PG Cert	
Specialised Translation PG Cert	
Teaching Languages (Arabic) MA	Ⓝ
Teaching Languages (English) MA	Ⓝ
Technology Entrepreneurship MSc	Ⓝ
Translation MA	Ⓝ
Translation Technology PG Cert	

All of our courses are available to start in September. Most courses are available to study either full-time or part-time.

**Distance learning option** Ⓝ

**January start available** Ⓝ

**Available as a top-up degree** Ⓝ

# School of Art, Architecture and Design



## Courses

Architecture Apprenticeship (RIBA 2 and 3) MArch	
Architecture RIBA 2 MArch	
Architecture: Professional Practice in Architecture RIBA 3 PG Cert*	Ⓟ
Creative, Digital and Professional Writing MA	Ⓟ
Design for Cultural Commons PG Cert	
Design for Cultural Commons PG Dip	
Environmental, Sustainable and Regeneration Design MA	
Fine Arts MFA	
Furniture Design MA	
Interior Design MA	
Jewellery and Silversmithing MA	
Product Design MA	
Public Art and Performance MA	
Textile Design MA	
Visual Communication: Graphic Design MA	
Visual Communication: Illustration MA	

With the direction of award-winning practitioners and access to inspiring studios, you'll be studying at an art school that's produced Turner Prize and Young Architect of the Year winners and creatives named as some of the most influential across the globe.

**Learn from world-class professionals** such as Patrick Brill OBE (Bob and Roberta Smith), Angharad Lewis, (former Editor of *Grafik Magazine*), Jerwood Applied Arts winner Simone ten Hoppel and Professor Peter St John (RIBA Stirling Prize 2016).

**Gain a wealth of industry experience** as you engage with professionals, communities and companies, and have the opportunity to work on live client projects happening both locally and across the world – our students have worked on projects in Japan, Greece, Russia and China.

**Benefit from outstanding facilities** and find success alongside our previous graduates. We provide inspiring studio spaces and workshops where you can innovate and create. From RIBA President's Medals to RSA Design Awards, our students and alumni have won them all.

**"At London Met there is a very friendly atmosphere. You are given so many opportunities to showcase your work to industry professionals. This contributes enormously to launching your career."**

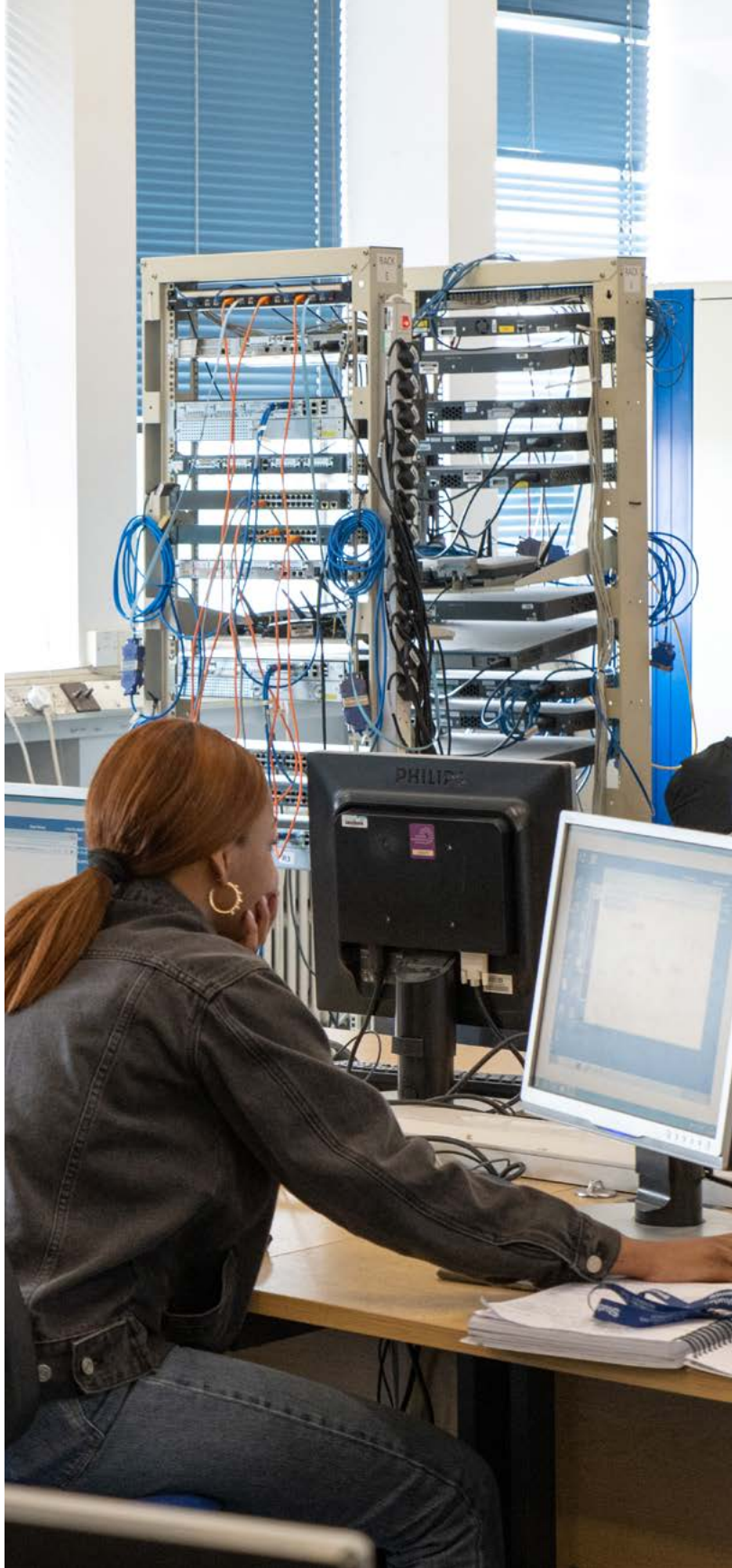
**Nikol Pechova** – RIBA 2 graduate whose work has been featured in *Blueprint* magazine. Nikol is now an architect in New York.

All of our courses are available to start in September. Most courses are available to study either full-time or part-time.

**January start available** Ⓟ

\*January-start only

# School of Computing and Digital Media



## Courses

We offer cutting-edge academic and professional qualifications in subjects including computer science, creative technologies, journalism, mathematics, data science and electronics.

**Be inspired by our first-rate lecturers and facilities.** Teaching is delivered by a team of highly qualified lecturers with a wealth of industry experience. We have a dedicated security lab in our Cyber Security Research Centre and advanced Cisco training labs. Many of our courses are accredited by professional bodies, including BCS, The Chartered Institute for IT, The Institution of Engineering and Technology and The Institute of Mathematics and its Applications.

**Meet our experts.** In addition to the University's own team of experienced academics, you'll have access to a diverse range of expert guest speakers – in the past we've welcomed industry professionals from Microsoft, Apple, Cisco and O2 as well as from the media and creative industries.

**Prepare for a successful career.** Our excellent careers provision and links with industry result in our graduates going on to have successful careers as graphic designers, network and software engineers, journalists, film makers, data scientists and analysts.

**"The module contents and the wealth of knowledge displayed by module leaders, as well as my colleagues during our seminars, are phenomenal. The tailor-made approach of utilising industrial experiences with analytical methods is one of my favourite things about London Met."**

**Adediran Saseyi** – Computer Networking and Cyber Security MSc graduate, now working as an information systems security specialist for a leading IT consultancy

Artificial Intelligence MSc	<a href="#">J</a>
Computer Networking and Cyber Security MSc	<a href="#">J</a>
Computer Networking and Cyber Security with Work Experience MSc	<a href="#">J</a>
Cryptography MSc	<a href="#">J</a>
Data Analytics MSc	<a href="#">J</a>
Digital Media MA	<a href="#">J</a>
Documentary Film Production MA	
Information Technology (Distance Learning) MSc	<a href="#">J</a>
Robotics with Artificial Intelligence MSc	<a href="#">J</a>

All of our courses are available to start in September. Most courses are available to study either full-time or part-time.

January start available [J](#)

# School of Human Sciences



## Courses

London Met is home to one of the largest and most advanced science teaching labs in Europe, making it the ideal place to study a degree in science.

**Access exceptional facilities.** One of our greatest assets is a £30 million Science Centre, which features a superlab with more than 280 workstations. Students studying sport-related subjects can benefit from London Met's sports therapy clinic and fitness assessment centre, both of which are found within this impressive facility.

**Gain professional accreditation.** Many of our human sciences courses are accredited by professional bodies. These include the Association for Nutrition, British Dietetic Association, Institute of Biomedical Science, Institute of Food Science and Technology, The Academy of Pharmaceutical Sciences, Royal Society of Chemistry and Society of Sports Therapists.

**Build a successful career.** Our graduates have gone on to work for employers such as the NHS, The Nutrition Society, Public Health England, GlaxoSmithKline and Arsenal and Chelsea Football Clubs.

**"London Met helped me develop more knowledge, but also helped me develop the interpersonal and professional skills when it comes to interacting with athletes. Gaining first-hand experience of this during placement modules for example was a great way to begin developing these crucial skills."**

**Matt Willmott** – Sports Therapy MSc graduate who is now Head of Physical Performance at Swansea City FC

Biomedical Science MSc	📄
Biomedical Studies (Distance Learning) MSc	📄
Blood Science MSc	📄
Blood Science (Distance Learning) MSc	📄
Cancer Immunotherapy MSc	📄
Cancer Pharmacology MSc	📄
Dietetics and Nutrition MSc	
Food Science MSc	📄
Human Nutrition (Public Health/Sports) MSc	📄
Medical Genomics MSc	📄
Pharmaceutical Science and Drug Delivery Systems MSc	📄
Physiotherapy (Pre-registration) MSc	
Sports Therapy MSc	

All of our courses are available to start in September. Most courses are available to study either full-time or part-time.

January start available 📄

# School of Social Sciences and Professions



London Met is home to a vibrant academic community covering a range of subjects such as criminology, community work, education, international relations, policing, politics, psychology and social work. Our aim is to effect change in society through demonstrating the value of social sciences and professions.

**Pave the way for a successful career.** Our graduates have gone on to forge successful careers in organisations including the European Union, the United Nations, the Metropolitan Police, the civil service, local authorities, the voluntary sector, housing associations and the NHS.

**Learn from world-class lecturers.** Our lecturers contribute to real-world issues on a local, national and global scale. They are experienced probation service professionals, teachers, senior police officers and world-leading researchers on feminist theory. In addition to our own academic experts, leading thinkers including diplomats, politicians, industry professionals and psychologist practitioners regularly contribute to a lively schedule of events.

**Gain professional accreditation.** Many of our courses are accredited by professional bodies, including the British Psychological Society and Social Work England.

**“Through the delicate nurturing of my tutors I thrived at university. Their belief in me and constant support was truly transformational and I try to emulate this experience for all of my students.”**

**Kelly Cooper** came to London Met as a mature student in 2000. She is now Dean of the School of Social Sciences and Professions.

## Courses

Addiction and Mental Health MSc	
Assessment-only route to Qualified Teacher Status	📄
Child and Adolescent Mental Health MSc	
Climate Security MA	
Cognitive Behavioural Therapy MSc	
Counselling Psychology Prof Doc	
Crime, Policy and Security Prof Doc	
Criminology MSc	📄
Criminology and Psychopathology MSc	
Doctor of Education	
Early Childhood Studies MA	
Education MA	📄
Health and Social Care Management and Policy MSc	📄
Human Rights and International Conflict MA	📄
International Relations MA	📄
International Security Studies MA	
Learning and Teaching in Higher Education MA	📄
Organised Crime and Global Security MA	📄
Peace, Conflict and Diplomacy MA	📄
PGCE Primary (3-7)	
PGCE Primary (5-11)	
PGCE Primary (7-11) (Key Stage 2)	
PGCE Secondary (subject specialisms in Computer Science with ICT, English with Drama, English with Media, Mathematics, Modern Languages, Science with Biology, Science with Chemistry, Science with Physics – see website for full details)	
Psychology MSc	
Psychology of Mental Health MSc	
Public Health MSc	📄
Safeguarding and Security MA	📄
Social Work MSc	
Woman and Child Abuse MA	📄
Youth and Community Work (Advanced Practice) MSc	📄
Youth and Community Work (with JNC Recognition) MSc	📄

All of our courses are available to start in September. Most courses are available to study either full-time or part-time.

January start available 📄

# Research and knowledge exchange

At London Met we value research for contributing to our shared quest to make a better society. We encourage collaborative and interdisciplinary initiatives among staff and students, providing solutions to tackle issues locally and across the globe.

## **Tackling violence against women and girls**

London Met's Child and Woman Abuse Studies Unit (CWASU) is developing the city of London's next Violence Against Women and Girls (VAWG) strategy, focused on prevention and early intervention.

This latest campaign, funded by the Mayor's Office for Policing and Crime, takes a public health approach to tackling violence and abuse. CWASU developed the first VAWG strategy for the capital more than a decade ago.



## **Home-grown housing**

HomeGrownHouse, led by Associate Teaching Professor George Fereday, stands to transform the way we think about timber building and sourcing of timber in the UK, by developing concepts for sustainable, low-cost, prefabricated housing made from domestically grown hardwood.

The project has received industry support from a leading wood processing equipment manufacturer who helped the project by testing new, low-waste methods of milling coppiced sweet chestnut timber.

HomeGrownHouse was showcased at the climate change conference COP26 in Glasgow in 2021.

## **Strengthening weapons conventions**

Since 2020, the Biological and Chemical Security Project based at the University has been developing a series of projects in an effort to provide a civil society input into strengthening controls on chemical and biological weapons in light of recent developments in the life sciences.

The team is now working on a project funded by the Joseph Rowntree Charitable Trust to develop a biological security code of conduct and mandatory training for life scientists on these matters.

## **Addressing poor air quality**

The Mayor of London's commitment to clean up toxic air at schools in the capital is one step closer to a reality thanks to the work of two London Met students.

Dion Mariyanayagam and Monika Rabka, working as part of an interdisciplinary team led by the Centre of Communications Technology and Cyber Security Research Centre, designed a low-cost air quality monitoring system that delivers real-time analysis using AI.

# Research degrees



## Research opportunities

Research forms a core part of life at the University, with more than 250 students conducting either full-time or part-time research on a wide range of topics.

You'll find staff members undertaking their own innovative, relevant and evidence-based research, a range of research centres, groups and units undertaking specialist, often ground-breaking, funded work and many partnerships with local and national stakeholders across a variety of sectors.

Our staff welcome the opportunity to supervise research students on topics related to their work. If you're engaged in a research programme such as a PhD, you'll find our Research and Postgraduate Office is there to provide support, advice and guidance for all of our vibrant research community. All our postgraduate research students are members of our Graduate School – a lively, stimulating and supportive environment with dedicated facilities for our researchers to help you on your journey.

### Our research qualifications

You can work towards a variety of research qualifications at London Met including Master of Research (MRes), Master of Philosophy (MPhil) and Doctor of Philosophy (PhD) as well as our professional doctorates.

An MRes is a research-focused alternative to an MSc or MA, and generally takes one year full-time or two years part-time.

At MPhil level, your research should represent an extension of existing knowledge, although the demands of originality and sustained enquiry are less than those required for a PhD. To obtain a PhD you're expected to investigate a topic and make an original contribution to knowledge. As a research student you'll be provided with research training

MPhil
MRes
PhD
Professional Doctorate

and have access to any master's-level modules that may be helpful to you. You'll also be encouraged to attend conferences, write papers and publish work while pursuing your research. Full-time students usually reach the standard for MPhil after two to three years of registration and for PhD within three to four years. If you're part-time, you usually reach the standard for an MPhil after three to four years and for a PhD it's generally within four to six years.

Compared to the PhD in terms of scale and rigour, the professional doctorate is aimed at busy professionals who want to undertake a substantial investigation into an area of current professional practice. Prof docs generally take three years full-time or four years part-time to complete.

[londonmet.ac.uk/research](https://londonmet.ac.uk/research)

# Facilities

By coming to London Met you're investing in your future. In return, we're investing in our facilities and services to ensure it's the best investment you'll ever make.

# and services



The University's fitness and recreation team runs an extensive programme of fitness classes with various exercise, holistic and recreational sports including salsa, pilates and boxfit. Membership is currently free for all London Met students and includes access to all classes and the gym.

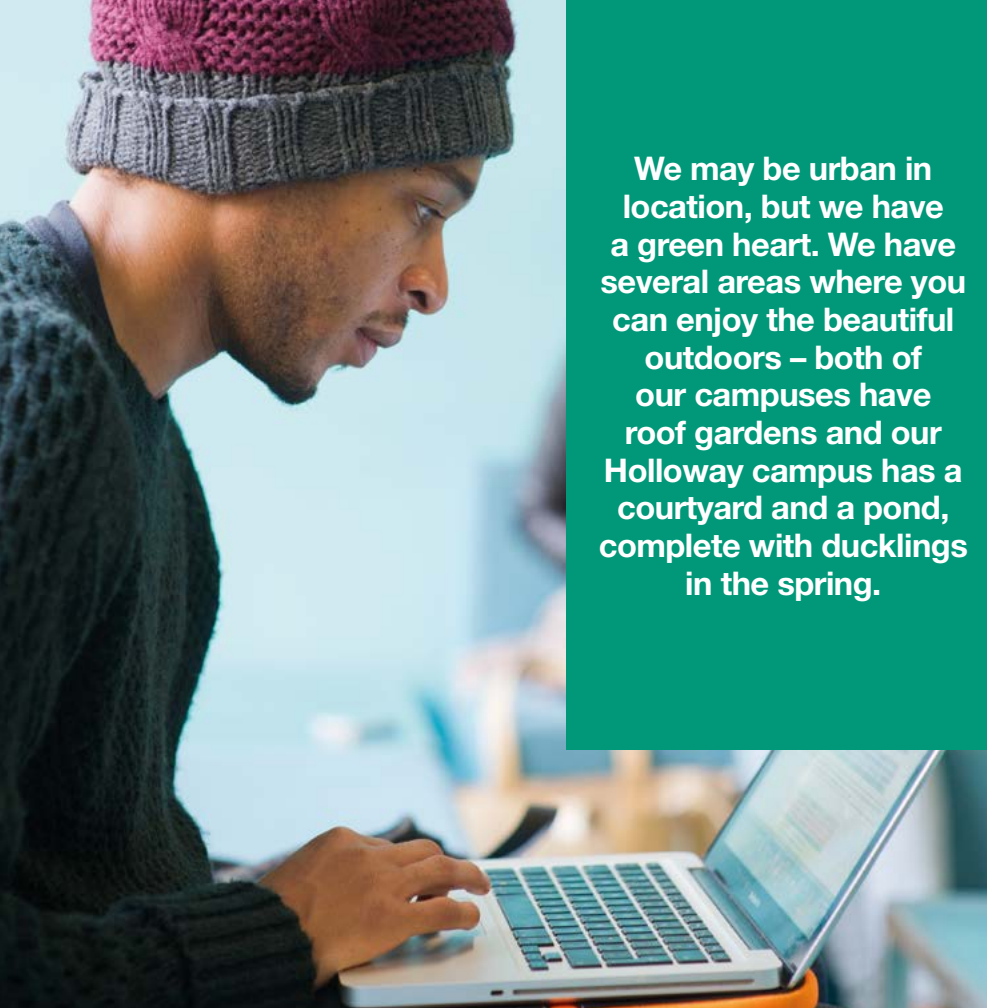
[londonmet.ac.uk/sports](https://londonmet.ac.uk/sports)  
f t i @ LDNMetFitness



The Science Centre at our Holloway campus is home to our Superlab, one of the largest and most advanced science teaching facilities in Europe.



Clockwise from top  
Exercise room  
Wood workshop  
The Superlab  
Bloomberg Room



We may be urban in location, but we have a green heart. We have several areas where you can enjoy the beautiful outdoors – both of our campuses have roof gardens and our Holloway campus has a courtyard and a pond, complete with ducklings in the spring.



Our Fairtrade campuses have plenty of places for a breakfast pit stop, a hot lunch or a quick caffeine fix. At Aldgate you'll find a café housed inside our beautiful Atrium where you can check out student, staff and guest artworks while you eat.



**Clockwise from top-left**  
 Learning Centre lobby  
 Calcutta House roof garden  
 The Courtyard at our Holloway campus  
 Fashion studio  
 Mock courtroom





**Clockwise from top-left**  
 Accelerator  
 Interpreting suite  
 Students in our library  
 School of Art, Architecture and  
 Design Summer Show

**The Special Collections**  
 The University's Special Collections  
 – located within the Wash Houses  
 at our Aldgate campus – are a  
 valuable resource for research  
 activity in a number of areas for  
 students, staff and external visitors.  
[londonmet.ac.uk/library](http://londonmet.ac.uk/library)

**The principal collections are:**  
 The Archive of the Irish in Britain  
 The Frederick Parker Collection  
 and Archive  
 E & A Wates Archive  
 The Trades Union Congress (TUC)  
 Library Collections  
 The University Archive

**Libraries and study areas**  
 Our libraries provide a wide range of information and  
 resources, as well as silent learning zones, bookable  
 group study rooms and comfy informal spaces  
 where you can meet and study collaboratively. There  
 are PCs as well as printing and copying facilities.

To save you time, there are self-service facilities to  
 borrow, return, renew or reserve an item. Our print  
 and digital resources include books, journals and  
 databases, many of which are available online 24  
 hours a day via our web-based catalogue. We also  
 have self-service laptop loan lockers that allow you  
 to borrow a laptop to take to lectures, a nearby café  
 or your favourite study spot.

Our academic liaison librarians also provide  
 learning support and help with finding and using  
 library resources for your studies. You can make an  
 appointment to see your librarian for advice.

Our library service is a member of the Society of  
 College, National and University Libraries (SCONUL  
 Access). This gives you the opportunity to access  
 the many other university libraries that also belong  
 to the scheme. For further information visit:  
[sconul.ac.uk/sconul-access](http://sconul.ac.uk/sconul-access)



# Student support

To help you get the most out of your university experience, you'll have access to outstanding support from our student services team. We also run workshops and events on aspects of student life such as mental and physical health and wellbeing, money matters and study strategies.

## School offices

When you start at London Met, your school office is your first point of contact for any query you may have in person, by telephone, email or online chat. You can talk to trained and knowledgeable staff about a host of enquiries relating to areas such as:

- enrolment
- your academic programme (including timetabling, module selections and results)
- ID cards
- transcripts
- council tax exemption and University letters such as confirmation of enrolment

## Student support

If you need extra support or information in other areas, our Student Services team can help.

## Money and accommodation

London has many exciting areas to live and work in, but finding somewhere great is about taking your time and considering your options – our Student Money and Accommodation Advice Service can help you find somewhere comfortable and affordable.



- **Halls of residence** are a great way to meet fellow students. We work with a number of different accommodation providers to suit all tastes and budgets.
- You may decide you'd rather **rent a flat privately** through a landlord or letting agent, either on your own or with a few friends. We can provide advice about where to look for properties, rental contracts, viewings and deposits.
- **Homestays** are an option if you want a supportive environment. If you're an international student, they're a great way to improve your language skills, as you'll be placed with a British family.
- We can provide advice on **hotels, hostels, B&Bs and short-stay private accommodation**. There are also several halls that offer single semester contracts or contracts of a flexible length.  
[londonmet.ac.uk/accommodation](https://londonmet.ac.uk/accommodation)

We can also help you navigate the various funding options available. Full information, including eligibility criteria, can be found on our website.  
[londonmet.ac.uk/funding](https://londonmet.ac.uk/funding)

## Counselling

Our professional counsellors offer confidential counselling to help you with everything from relationship issues to family concerns. You can also meet with a counsellor to help maximise your potential, both personally and academically. We run workshops on topics including mindfulness, motivation and meditation.

[londonmet.ac.uk/counselling](https://londonmet.ac.uk/counselling)

## Students with additional needs

Our Disabilities and Dyslexia Service (DDS) offers support to students with disabilities or Specific Learning Difficulties (SpLDs), physical or sensory disabilities and long-term medical conditions including mental health challenges. We can offer advice on reasonable adjustments in line with the Equality Act (2010), guidance on available funding such as the Disabled Students' Allowance (DSA) and we're also on hand to talk through any concerns you may have.

[londonmet.ac.uk/disabilities](https://londonmet.ac.uk/disabilities)

# London life



London is home to top organisations in every sector – from finance and legal to architecture and the creative arts. You name it, you'll find an organisation in the capital to match your interests and aspirations, whether it's a small thriving tech start-up or a global giant such as Google or the BBC.



Get swept up in the buzz around **London Fashion Week** with displays from top British designers and see exciting design innovation at South Kensington's **Design Museum** and the **London Design Festival**, the latter of which has featured work by graduates from our School of Art, Architecture and Design in recent years.

As one of the great theatre capitals of the world, London has plenty on offer to entertain you throughout the year – the **Almeida Theatre** is down the road, just off Upper Street, and the theatres in the **West End** and on the **South Bank** are just a short Tube ride away from both our campuses.

More than 250 festivals take place in London every year including the largest free festival, the Mayor's Thames Festival, and Europe's biggest street festival, the **Notting Hill Carnival**, which attracts close to one million people.

Whether it's cricket at **The Oval**, **Twickenham's** rugby, football at **Wembley** or the world's oldest tennis tournament, **Wimbledon**, there's live sporting action for everyone to enjoy across the capital. **Arsenal Football Club** is a stone's throw away from our Tower Building, and on match days fans transform the neighbouring streets into a sea of red shirts, scarves and singing.

**London is one of the most exciting, vibrant, cosmopolitan cities in the world. It's a place to explore, socialise and have fun, but it's also a city where you can excel, progress and make huge strides forward in your career.**

**The British Library** is just a short journey from our Islington home and, with more than 150 million items, you'll never run out of new fascinating facts and items to discover, including the Magna Carta and manuscripts of lyrics by The Beatles.

If digital is your thing, **Silicon Roundabout** is fast becoming Europe's answer to Silicon Valley – based in the area around Hoxton, Old Street and Shoreditch, where our own business incubator **Accelerator** is based.

At London Met you're within easy reach of all major transport hubs, from trains to explore the UK at weekends, to London's many airports. International students can easily get home to visit their friends and family but there's nothing to stop anyone taking advantage of a cheap flight to Europe. We're minutes away from St Pancras, and from there **Eurostar** will get you to Paris, Brussels or Amsterdam in a matter of hours.



As well as providing the best possible university education, we'll give you plenty of opportunities to enhance your job prospects at the same time.

# Your future starts here



## Earn while you learn

We can help you find paid roles that will look fantastic on your CV. Our very own in-house temping agency, Met Temps, can help you find a job on campus. You can also become a student ambassador, success coach or social media ambassador, all of which are paid roles and a great way to help you to develop the skills employers are looking for (and earn a bit of extra cash while you study with us).

## Gain experience through volunteering

At London Met you can get involved in our vibrant volunteering programme and gain experience with community-based organisations. Volunteering is a great way to get work experience, develop job skills and give your CV a significant boost.

## Get expert career advice

Whether you know exactly what you want to do when you finish the course or aren't quite sure what direction to take next, our Careers and Employability Service can talk you through your options. We'll be here to help you stand out in the competitive job market, land a new role or receive that well-deserved promotion.

## One-to-one advice

You will have access to personalised advice from our supportive careers consultants. We can help you with your CV, further study, your job search, interview skills and completing an application form. We can also help you highlight transferable skills that employers are looking for such as critical thinking, problem solving, time management, attention to detail and teamwork.

## Join our alumni network

When you graduate, you'll become a member of our global alumni community, offering an ideal way to stay in touch with your former classmates and lecturers, and also network with fellow graduates who go on to become leaders in their fields across the world. Alumni benefits also include access to our libraries, gym and careers service for three years after graduation.

## Career workshops

Our career workshops are designed to help you succeed in the graduate job market. You can choose from a range of workshops on topics including job search, networking, creating and customising a CV, using LinkedIn, completing applications and interview techniques.

## Employer events

We provide opportunities for you to meet employers by organising employer presentations, fairs and careers conferences.

## London Met mentoring

Our mentoring scheme gives you an opportunity to be put in touch with a career mentor from your chosen employment sector. Mentors come from a range of subject disciplines and will have professional experience in their sector.

**“We work hard to give our graduates the best advice and guidance to help them progress in their careers. We've built excellent relationships with employers and work with them to better understand what we can do to give our students the edge in the world of work.”**

**Neelam Thapar** – Head of Careers and Employability at London Met



Got a business idea you want to get off the ground, or want to learn more about freelancing? **Accelerator** is our specialist business incubator that helps students and graduates turn ideas into viable ventures

Being your own boss can be hugely rewarding, and is a great way to take control of your future and do something you love – all in a really supportive environment. Based off-campus in London's Tech City in Shoreditch, **Accelerator** is a thriving entrepreneurial community and is home to 30 innovative early-stage start-ups.

Accelerator runs events and programmes aimed at giving you all the advice, support, networking opportunities and resources you need to get started.

Annual events include:

- an idea and pitching competition in which students compete for prizes worth up to £30,000
- opportunities to sell your product at a busy London market
- summer start-up programmes to help turn your idea into a reality

Many London Met graduates' businesses have started and grown thanks to Accelerator, including:

- **Arctic Power Berries**, natural powdered berry products, sold at **Harrods**, **Ocado** and **Amazon**
- **TRIM-IT**, the UK's first mobile barbershop
- **Dottore London**, a medical clinic for Italians living in London
- **Sonora Taquería**, authentic Mexican street food
- **betting.com**, an analytics platform for tipsters

[londonmet.ac.uk/accelerator](https://londonmet.ac.uk/accelerator)



Anna and Evelina set up **Arctic Power Berries** – a gluten-free berry powder that's transforming smoothies, yoghurts and bowls of cereal everywhere. It's proving so popular it's now sold by retailers including Harrods, Ocado, Amazon and Whole Foods!

[londonmet.ac.uk](https://londonmet.ac.uk)

Joining a society, taking up a new sport or getting involved in a campaign is a great way to learn different skills, become part of university life and, of course, make new friends.

# Student life



## Students' Union (SU)

Once you've enrolled, you become a member of the Students' Union (SU). The SU is here to support, represent and enrich the lives of our students, and can lobby the University and government to improve opportunities for all students. [londonmetsu.org.uk](https://londonmetsu.org.uk)

**Get involved with our student media** – The SU has its very own radio and magazine outlets – Verve Media. You could volunteer as a journalist, graphic designer, DJ, researcher and more. You can also tune in online: [verve-lmsu.com](https://verve-lmsu.com)

**Join a student society** – Whether your interests lie in politics, fashion, theatre, human rights, life drawing or something else entirely, there are more than 20 societies to choose from.

**Take up a team sport** – It's a great way to get fit, have fun and meet new people. Basketball, cheerleading, futsal, cricket, football and volleyball are just a few on offer. Some of our teams also represent us in the British Universities and Colleges Sport (BUCS) championships and the London Universities Sport Leagues (LUSL).

Our Holloway campus houses The Rocket, which alongside being a great daytime café bar and social space, hosts a full programme of entertainment during term time.



# Fees and funding

Studying a degree at London Met is an investment in your future. Master's and PhD graduates on average earn more than those with only an undergraduate degree.

Source: Institute for Fiscal Studies report, September 2020



## **How much will my course cost if I start in September 2022 or January 2023?**

Tuition fees for postgraduate programmes vary according to the course, but they typically start from £9,300 for a MA/MSc for full-time UK students and from £16,225 for full-time international students. Research degrees vary and there are often additional fees. Fees are reviewed annually and are likely to change to take into account inflationary increases. Please check the course pages on our website for the latest fees information before applying to the University.

[londonmet.ac.uk/fees](https://londonmet.ac.uk/fees)

## **What funding is available?**

If you're starting a postgraduate master's course (either full-time or part-time), you may be eligible for a Postgraduate Loan (PGL) from Student Finance England. If you're starting a PhD, you may be eligible for a Doctoral Loan. The loan will be a contribution towards the costs of study, ie it will be at your discretion to use the loan towards fees, maintenance costs or other costs. The loan is non-means-tested and will be paid directly into your bank account.

Applications normally open in June and can be made online. You can find out whether you're eligible and the latest information about the loans on the Student Finance website:

[gov.uk/funding-for-postgraduate-study](https://gov.uk/funding-for-postgraduate-study)

## **Can I get a scholarship?**

There are a range of scholarships available to students undertaking postgraduate study, including the Vice-Chancellor's PhD Scholarship, which comes with a fee waiver and a stipend based on the London Living Wage. This funding is available for a maximum of four years.

[londonmet.ac.uk/scholarships](https://londonmet.ac.uk/scholarships)

# How to apply

Applying to us is easy. Simply choose a course, check the entry requirements and follow the relevant instructions below. You can study many of our courses on either a full-time or part-time basis starting in either September or January to best suit your needs.

For most of our postgraduate courses, we encourage you to apply online. Visit the relevant course page on our website and select Apply now to begin your application.

## PGCE courses

You can apply for all teacher training courses, apart from the assessment-only route, through the Department for Education's apply for teacher training service.

[gov.uk/apply-for-teacher-training](https://gov.uk/apply-for-teacher-training)

## Social Work MSc

For our full-time social work degree, you may apply through UCAS at [ucas.com](https://ucas.com) or you can apply directly to the University.

## What you'll need to complete your application

When completing the application form, you'll need to have the following information at the ready:

- Your home address
- Your qualifications (including dates achieved, name and subject of qualification and overall grades)
- Your employment history
- GCSE English and Maths (if applicable) qualifications (or equivalent)
- Contact details for two referees, preferably email addresses

## When to apply

Places on our taught courses are offered on a

first-come, first-served basis to suitably qualified applicants, so for most courses there is no fixed closing date. However, we suggest you submit your application as soon as possible because applications will only be considered if there are places available on the course.

## Entry requirements

We usually require you to have a good honours degree or an equivalent qualification in an appropriate subject, or a recognised overseas qualification. Some courses will accept substantial relevant work experience instead of a degree. Decisions on applications for taught courses (MA and MSc degrees, and Postgraduate Diplomas and Certificates) will be made solely on the basis of your ability to benefit from the course.

## What happens next

The University or a selection committee considers applications for taught courses. A decision may be made on the basis of your application or we may ask you to attend an interview. We may also be able to interview you during one of our open evenings. We'll notify you via email of our decision. If you're accepted on a course we'll automatically send you information about induction and enrolment before your course begins. You'll always be able to track your application via our Applicant Portal:

[londonmet.ac.uk/evison](https://londonmet.ac.uk/evison)

## Applying for a research degree

Like most of our other postgraduate degrees, you can apply online for a research degree (eg PhD or

MPhil). Your research proposal will be passed to the relevant academic school within the University. They will identify members of academic staff who have the expertise to supervise your research project. In some cases, this may involve assembling a small interdisciplinary team. The proposal you submit at this stage will not commit you to an irrevocable course of research, but will serve as a foundation for further developing it. Applying for a research degree can take time, and applicants will be called for an interview before an offer of a place is made.

You can find out about potential supervisors in your area of interest who you may wish to contact to discuss your project via our Research Centres.

For more information and to apply, visit:

[londonmet.ac.uk/applyresearch](https://londonmet.ac.uk/applyresearch)

or check out our frequently asked questions:

[londonmet.ac.uk/research/faqs](https://londonmet.ac.uk/research/faqs)

For research degree enquiries, email:

[courseenquiries@londonmet.ac.uk](mailto:courseenquiries@londonmet.ac.uk)

## Tracking your application...

### ...When applying direct

If you've applied direct you can track your direct application on our applicant portal. Details of this will be sent to you once we've received your application. We aim to make a decision within 10 working days of receipt of your application, although processing times may vary slightly depending on the time of year.

### ...When applying through UCAS (for a PGCE course or Social Work)

If you've applied through UCAS, you can track your application and reply to offers via UCAS's tracking service, UCAS Track. We'll email you to notify you of our decision. For courses that require an interview, decisions may take longer.

## Interviews

Wherever possible, we aim to make a decision based on the information provided on your application. However, you may be invited to attend an interview to discuss your application further with a tutor.

## Art, architecture and design portfolios

If you're applying for a course at our School of Art, Architecture and Design, you're likely to be invited to a short interview (about 20 minutes) and asked to bring or email us a portfolio of your work. If you're applying for a theatre-related course, we may invite you to an audition. To find out the latest information about the School's interview process, visit our website.



## Help and advice

If you have any questions about applying to London Met, call, email or chat online with us and we'll be happy to help.

+44 (0)20 7133 4202

[courseenquiries@londonmet.ac.uk](mailto:courseenquiries@londonmet.ac.uk)

[londonmet.ac.uk/contact](https://londonmet.ac.uk/contact)

Find out more about applying to London Met at:

[londonmet.ac.uk/applying/postgraduate](https://londonmet.ac.uk/applying/postgraduate)

You can find our term dates at:

[londonmet.ac.uk/termdates](https://londonmet.ac.uk/termdates)

If you're interested in talking to our tutors or current students, you may also be interested in attending one of our open events.

[londonmet.ac.uk/opendays](https://londonmet.ac.uk/opendays)

## Disclaimer

This edition of the postgraduate prospectus describes the facilities and courses that the University intends to offer during the 2022–23 academic year (that is, commencing in autumn 2022). Every effort has been made to ensure that the information contained in this prospectus is helpful, fair and accurate at the time of printing. However, this information is subject to change over time.

The University will take reasonable steps to provide the courses and services as described; however, the University cannot guarantee the provision of any course or facility. Some circumstances, such as staff changes, resource limitations and factors over which the University has no control, such as a change in the law or the level of demand for a particular programme or module (please note that this list is non-exhaustive), may result in the University having to withdraw or change aspects of the programmes, modules and/or student services detailed in the prospectus. This could include, but not necessarily be limited to, programme/module content, staffing, the location where the programme/module is taught or the manner of teaching delivery, or the facilities provided to deliver or support the programme. Where circumstances demand an unavoidable change or where it is necessary for the University to discontinue a programme of study, the University will take reasonable steps to minimise the effect and all proposed changes will be notified promptly to potential applicants who have registered an interest in the relevant programme as well as being reflected on the course pages on the University's website ([londonmet.ac.uk/courses](https://londonmet.ac.uk/courses)). It is important that you check our website for the most up-to-date information. In addition, any changes between the prospectus and the proposed course and services will be notified to applicants at the time of making an offer.

If you have any particular concerns regarding any proposed changes, you must make the University aware of these as soon as possible. Should you become a student at the University, the teaching, assessment and other educational services will be described in the relevant course handbook and University regulations. Registration at the University and enrolment on a course will be subject to you complying with the University's registration procedure and your acceptance of the conditions of enrolment

and the University's regulations (copies of which can be found at [londonmet.ac.uk/regulations](https://londonmet.ac.uk/regulations)).

When you enrol you are personally liable to pay your tuition and other fees in line with the University's Fees Regulations (visit [londonmet.ac.uk/regulations](https://londonmet.ac.uk/regulations)). If you have outstanding University debts, you will not be permitted to re-enrol at the University in future years and if you are in your final year of study and any part of your tuition fees is outstanding your award may be withheld and you will not be permitted to attend a graduation ceremony.

### Home/UK students – tuition fees

You can read more about our fees on page 37. Fees for each of our courses are published on our online course pages when they're available. Fees are reviewed annually and are likely to change to take into account inflationary increases. Please check our course web pages at [londonmet.ac.uk/courses](https://londonmet.ac.uk/courses) for fees before applying.

### International students – tuition fees

International tuition fees for each of our courses are published on our online course pages when they're available. Please check our course web pages at [londonmet.ac.uk/courses](https://londonmet.ac.uk/courses) for fees before applying.

London Metropolitan University processes personal data belonging to its applicants, students and others, and complies at all times with the EU General Data Protection Regulation 2016 and Data Protection Act 2018. The University's Data Protection Policy and Student Privacy Notice are available at [londonmet.ac.uk/data-protection](https://londonmet.ac.uk/data-protection). We have an equal opportunities policy and if you would like a copy, please ask us.

In line with our admissions policy we do not discriminate against applicants on any basis or protected characteristic.

The University is a company limited by guarantee, registered in England, number 974438. Registered office: 166–220 Holloway Road, London N7 8DB.

Published in February 2022  
Edited by the London Met marketing team  
Based on an original design by Turnbull Grey  
Photography by Stephen Blunt

Thank you to all the students, staff and graduates who helped us produce this prospectus by contributing quotes, photographs and smiles.

# Contact us

[londonmet.ac.uk/contact](https://londonmet.ac.uk/contact)  
[courseenquiries@londonmet.ac.uk](mailto:courseenquiries@londonmet.ac.uk)  
+44 (0)20 7133 4202

   @LondonMetUni  
 /LondonMetUniversity



As one of the leading universities in the country for carbon reduction, we're continuing our commitment to environmental sustainability by printing this guide on paper from sustainable sources