



Shoreditch Learning Commons Project

Gergana Avramova
Interior Architecture and Design

Nature and Light



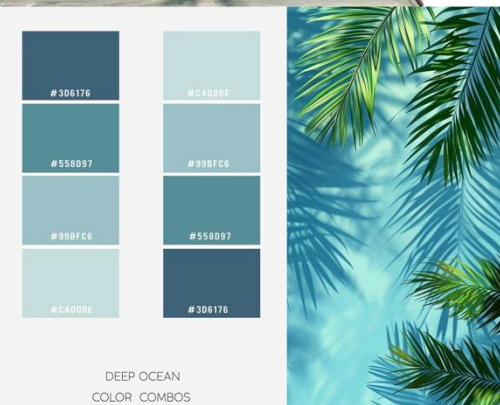
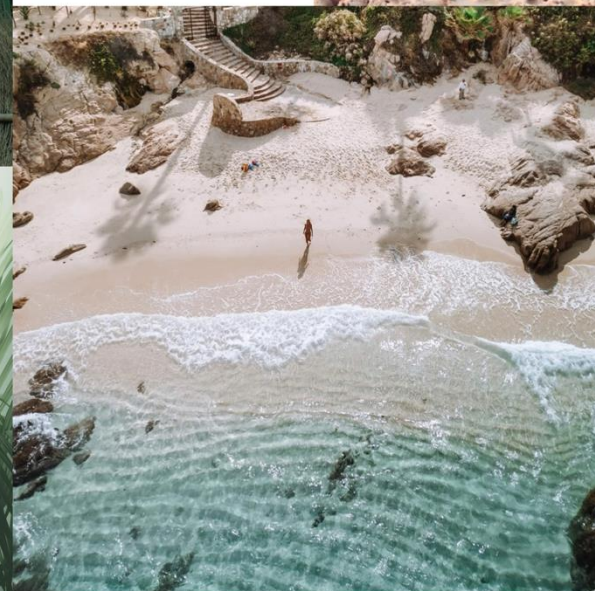
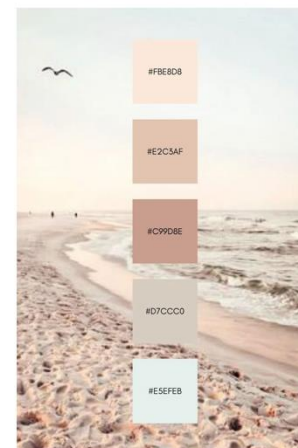
Concept

Nature and Natural Light.

Learning Commons is a learning space, that is both physical and virtual—a place to experiment, practice, celebrate, learn, work, and play. Incorporating plants and have lots of natural light in the layout of the learning spaces makes students feel more comfortable and satisfied. Students are also much more productive when they are near a natural elements.

Moodboard

Natural elements
and colors –
wood, stones,
sand, water,
grass, plants.



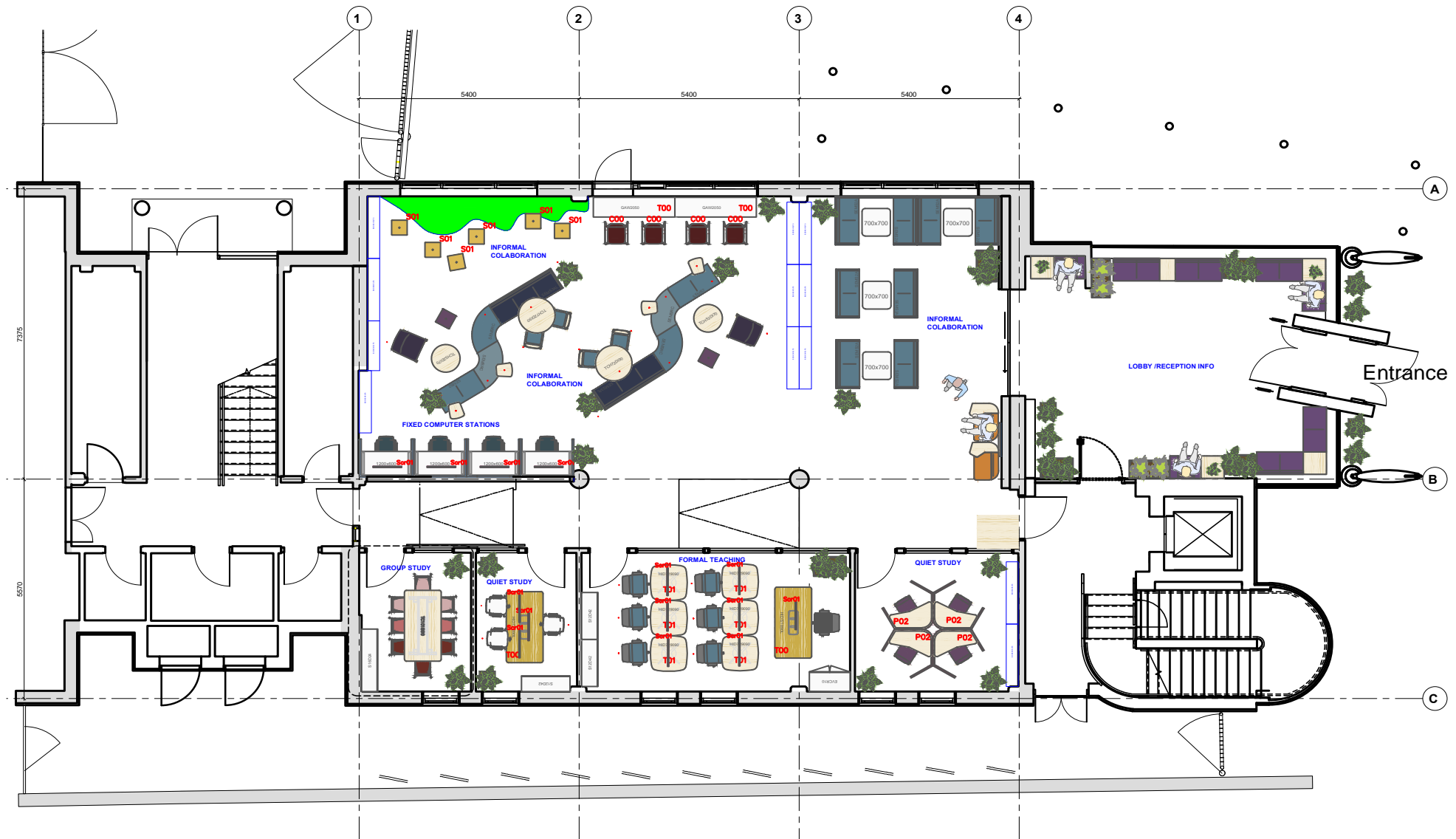
Precedents

Fun modern spaces for study and teaching.

Learning space types: quiet study, group study, informal collaboration, formal teaching spaces.



Ground Floor



First Floor

