

Studio 04

Students

Abhinand Sankeerthanam
 Blazej Browarnik
 Cesar Martinez
 Dylan Marston
 Elena Constandache
 Fabiane Lonardelli
 Jack Elliott
 Kent Law
 Lamba Adelina
 Maite Sanchez
 Nicolae Manoli
 Pauline Mouala
 Sheroek Taha
 Tasnim Sikder

Tutors

Studio 4
 Fran Balaam
 Ingrid Petit

01 Site and Context

Frome is one of the few UK towns to declare a housing crisis. Attracted by its distinctive character and community spirit, affluent city dwellers have been moving to the town, driving locals out of the housing market. There is now a growing demand for new affordable housing in the town. But where and what should this housing be? How do we design homes that preserve the essence of rural towns?

02 Case Study: Housing

Studio 4 took this challenge head-on and critiqued the generic housing models seen nationwide. We explored ideas for new types of higher-density rural housing and developed solutions that reflected Frome's character.

We began by researching case studies, producing detailed drawings and physical models of key housing projects. This formed a collective studio resource and provided the foundation for individual design projects.

03 Urban Rural Housing

Each student designed a housing scheme on a small site within or on the edges of the town. Proposals were rooted in a clear understanding of the place and people, and worked together to build strong personal briefs for the projects. We learned fastest when there was a balance between challenge and support – the main project was ambitious within clearly defined parameters.

We moved fluidly between the scales of the neighbourhood, home, and room, developing designs and testing proposals through group discussions.

Workshops throughout the year further developed our understanding of housing architecture, construction techniques, and essential skills such as technical drawing, image-making, and model-making.

Studio 4 travelled to Somerset and were based in Frome, where we divided our time between studying the town and working directly on our sites.



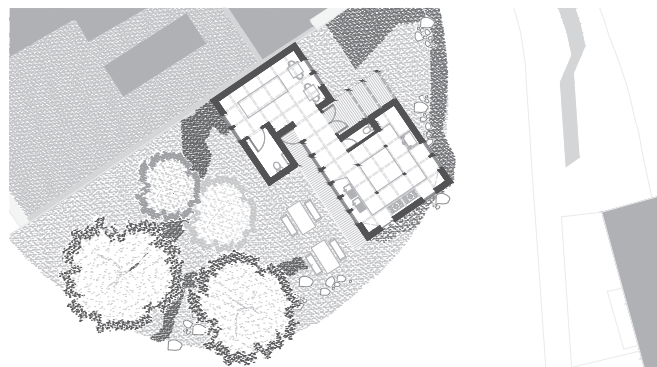
01



02



03



04



06

Fig 01: Development Sketches, Pauline Mouala
Fig 02-03: Internal Spaces, Pauline Mouala
Fig 04: Ground Floor Plan, Pauline Mouala



05



07

Fig 05: Physical Model, Pauline Mouala
Fig 06: Proposed Section, Pauline Mouala
Fig 07: Physical Model, Pauline Mouala



01



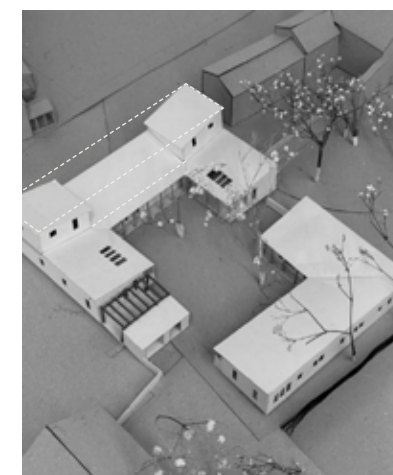
02



03



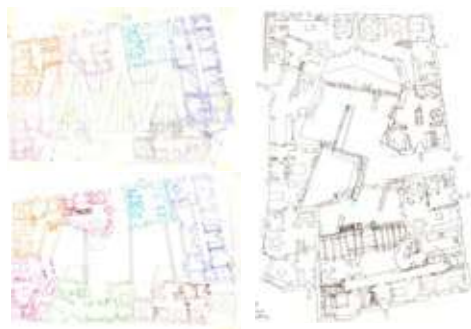
04



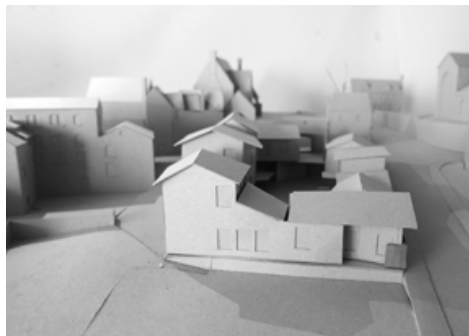
05

Fig 01-02: Internal Spaces, Pauline Mouala
Fig 03: Proposed Axonometric, Pauline Mouala
Fig 04: Ground Floor Plan, Pauline Mouala

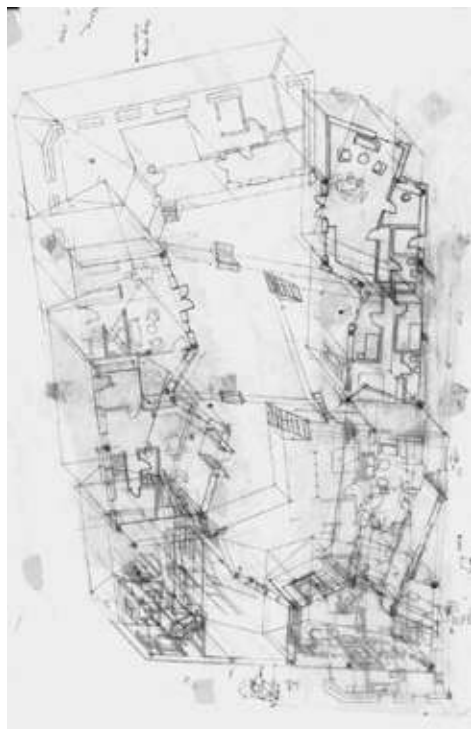
Fig 05: Physical Model, Pauline Mouala



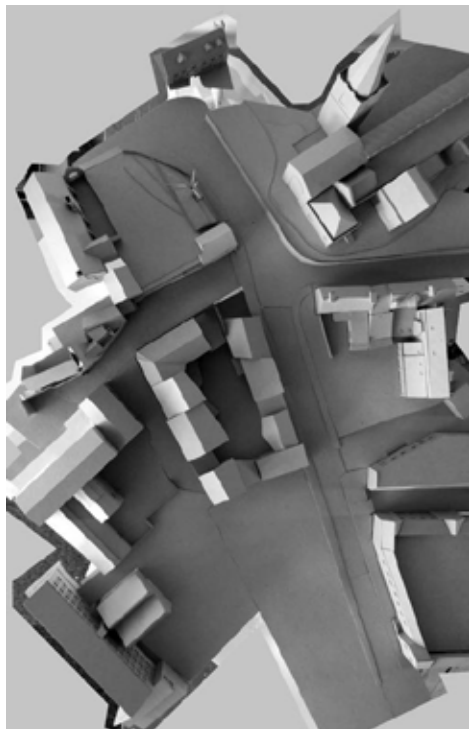
01



02



03



04

Fig 01: Development Sketches, Maite Sanchez
Fig 02: Physical Model, Maite Sanchez
Fig 03: Development Sketch, Maite Sanchez



01



02

Fig 01: Proposed Section, Maite Sanchez
Fig 02: Proposed Ground Floor Plan, Maite Sanchez



01



02



03



04

Fig 04: Proposed Ground Floor Plan, Elena Constandache



01



02



03



04



05

Fig 01: Physical Model, Elena Constandache
Fig 02: Proposed Section, Elena Constandache
Fig 03-05: Physical Models, Elena Constandache



06

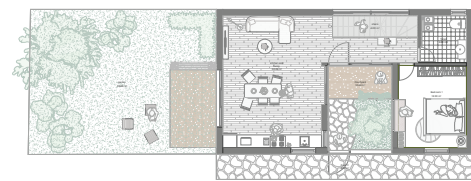
Fig 06: Visualisation, Elena Constandache



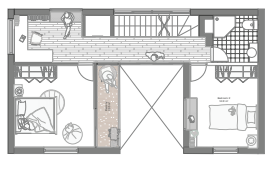
01



02



03



04



05



06

Fig 01-02: *Physical Models*, Dylan Marston
Fig 03: *Ground Floor Plan*, Tasnim Sikder
Fig 04: *First Floor Plan*, Tasnim Sikder

Fig 05: *Physical Models*, Tasnim Sikder
Fig 06: *Proposed Section*, Sheroek Taha



01



02



03



04



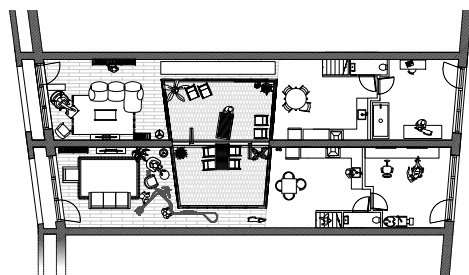
05

Fig 01: *Visualisation*, Nicolae Manoli
Fig 02-03: *Proposed Sections*, Nicolae Manoli
Fig 04: *Proposed Ground Floor Plan*, Nicolae

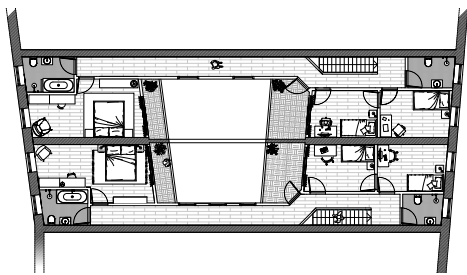
Manoli
Fig 05: *Visualisation*, Nicolae Manoli



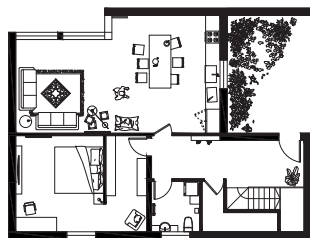
01



02



03



04



05



06

Fig 04: Ground Floor Plan, To Kin Law
Fig 05: Physical Model, To Kin Law
Fig 06: Physical Model, To Kin Law



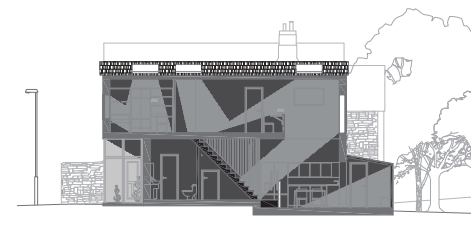
01



02



03



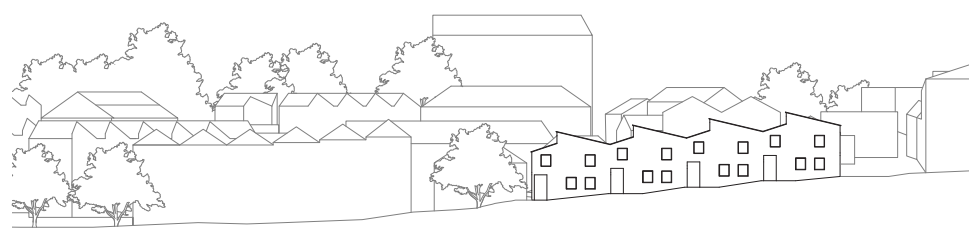
04



05



06



07

Fig 01&03: Physical Models, Cesar Guerrero
Fig 02: Site Plan, Sheroek Taha
Fig 04: Proposed Section, Dylan Marston

Fig 05: Visualisation, Cesar Guerrero
Fig 06: Axonometric, Tasnim Sikder
Fig 07: Section in Context, Lamba Adelina

Studio 05

Students

Avinash Bhattarai
 Anvesh Dammalapati
 Akram Gouraya
 Ambroise Legrain
 Charlie Hellman
 Laaibah Iqbal
 Khushi Amin
 Kyaw Thukha Aung
 Sara Bassaid
 Vu Tue Minh Nguyen
 Barbara Nguyen
 Aaryan Patel
 Leticia Gomes Brasil
 Gerda Paulauskaite
 Chungkan Yau
 Osa Peters Tamah

Tutors

Studio 5
 Theo Thyiades
 Adam Webster

01 Theatre Case Studies

This year, Studio 5 explored the role of performance spaces in shaping collective life in the city. Our focus moved across scales — from the close study of existing theatres to the imaginative design of new, temporary, and permanent spaces for gathering, storytelling, and exchange.

In the first project, students worked in groups to observe and model London theatres. Through drawing, modelling, and photography, they uncovered the structural and spatial logics of these buildings — how form and material define atmosphere, and how each theatre situates itself within its urban context. From these studies emerged precise drawings and models that articulated the infrastructure behind performance.

02 A Temporary Theatre

In the second project, attention turned to Walthamstow. Individually, students surveyed the textures, histories, and spatial rhythms of their designated sites. They designed temporary

theatres — lightweight structures intended to last a year before being disassembled and reassembled elsewhere. These proposals engaged directly with the typologies and dimensions of the city, balancing intimacy and visibility, ephemerality and permanence.

03 An ‘Anti-monumental’ Theatre

For the final project, students proposed ‘anti-monumental’ theatres for the same Walthamstow sites. These were generous spaces: part performance hall, part street, part classroom, part playground. Each design drew on a deepening understanding of structure, material ecology, and social need. Timber trusses, translucent façades, and reconfigurable interiors seek to define a flexibility grounded in public life.

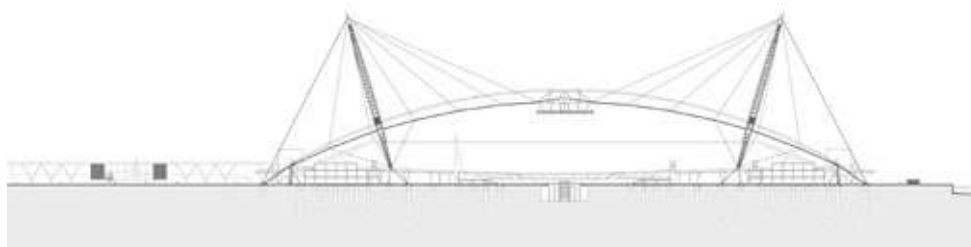
Studio 5 reimaged theatre not simply as a building, but as civic infrastructure.



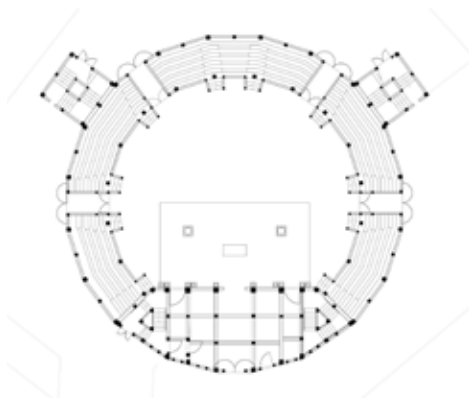
01



02



03



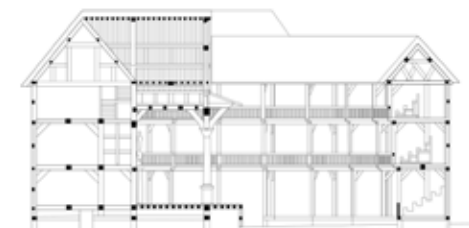
04



05



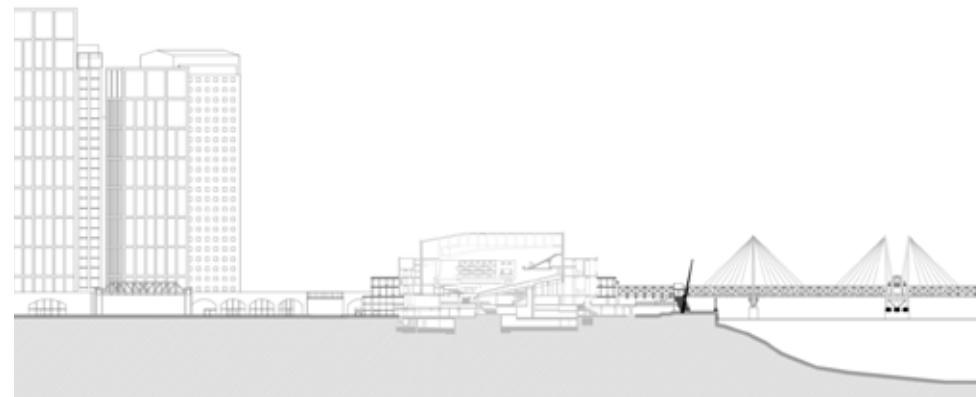
06



07

Fig 01-03: Case Study: *The Millennium Dome*, Groupwork

Fig 04-07: *The Globe Theatre*, Groupwork



01



02



03



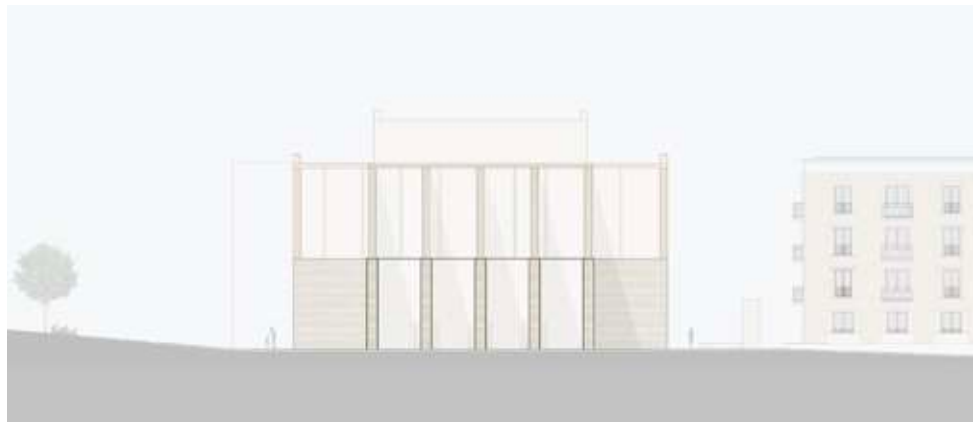
04

Fig 01: Case Study: *The National Theatre*, Groupwork

Fig 02: *Temporary Theatre*, Barbara Nguyen

Fig 03: *Temporary Theatre*, Amin Kushi

Fig 04: *Temporary Theatre*, Anvesh Dammalapati

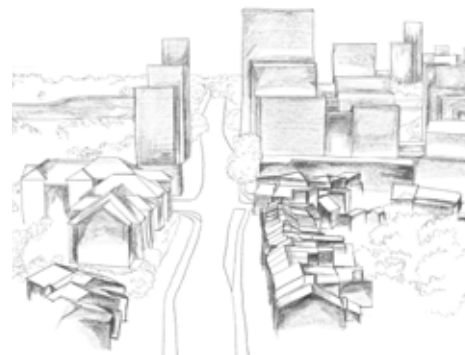


01



02

Fig 01: *Anti-monumental Theatre*, Amin Kushi
Fig 02: *Anti-monumental Theatre*, Stephan Yau



01



02

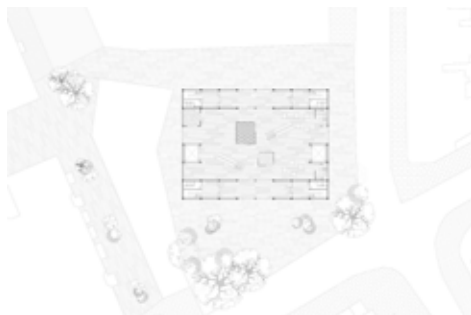


03

Fig 01: *Anti-monumental Theatre*, Vu Tue Minh Nguyen
Fig 02-03: *Anti-monumental Theatre*, Barbara Nguen



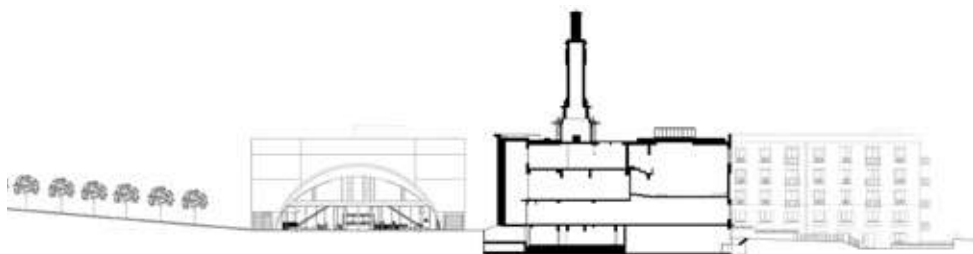
01



02



03



04

Fig 01-02: *Anti-monumental Theatre*, Vu Tue Minh Nguyen

Fig 03: *Anti-monumental Theatre*, Kyaw Thukha Aung

Fig 04: *Anti-monumental Theatre*, Anvesh Dammalapati



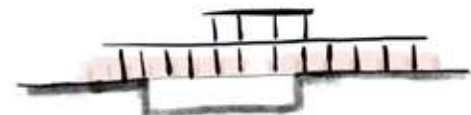
01



02

Fig 01: *Anti-monumental Theatre*, Aaryan Patel

Fig 02: *Anti-monumental Theatre*, Amin Kushi



01



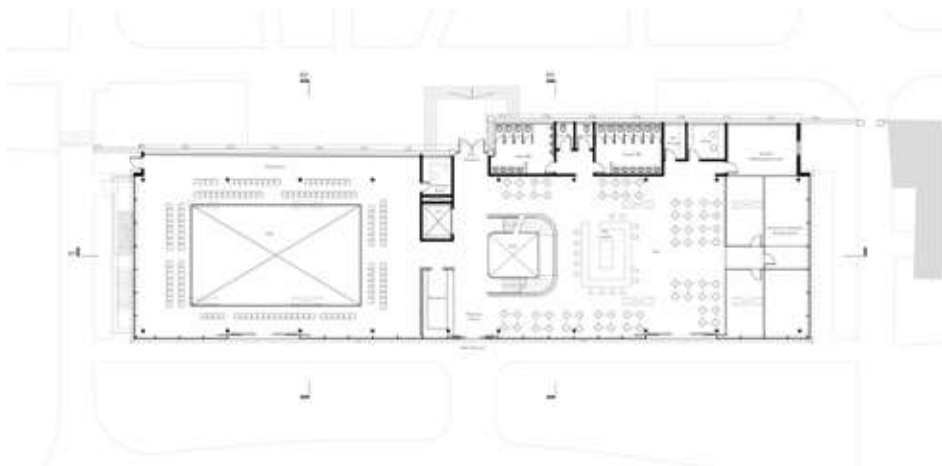
02



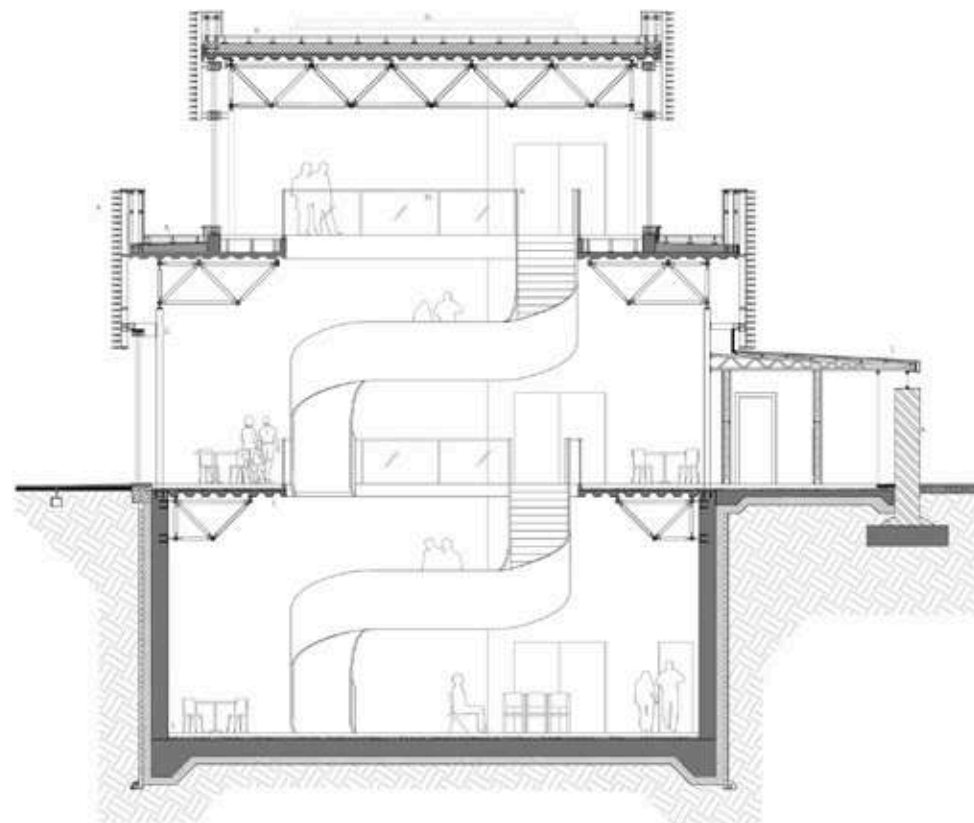
03



04



05

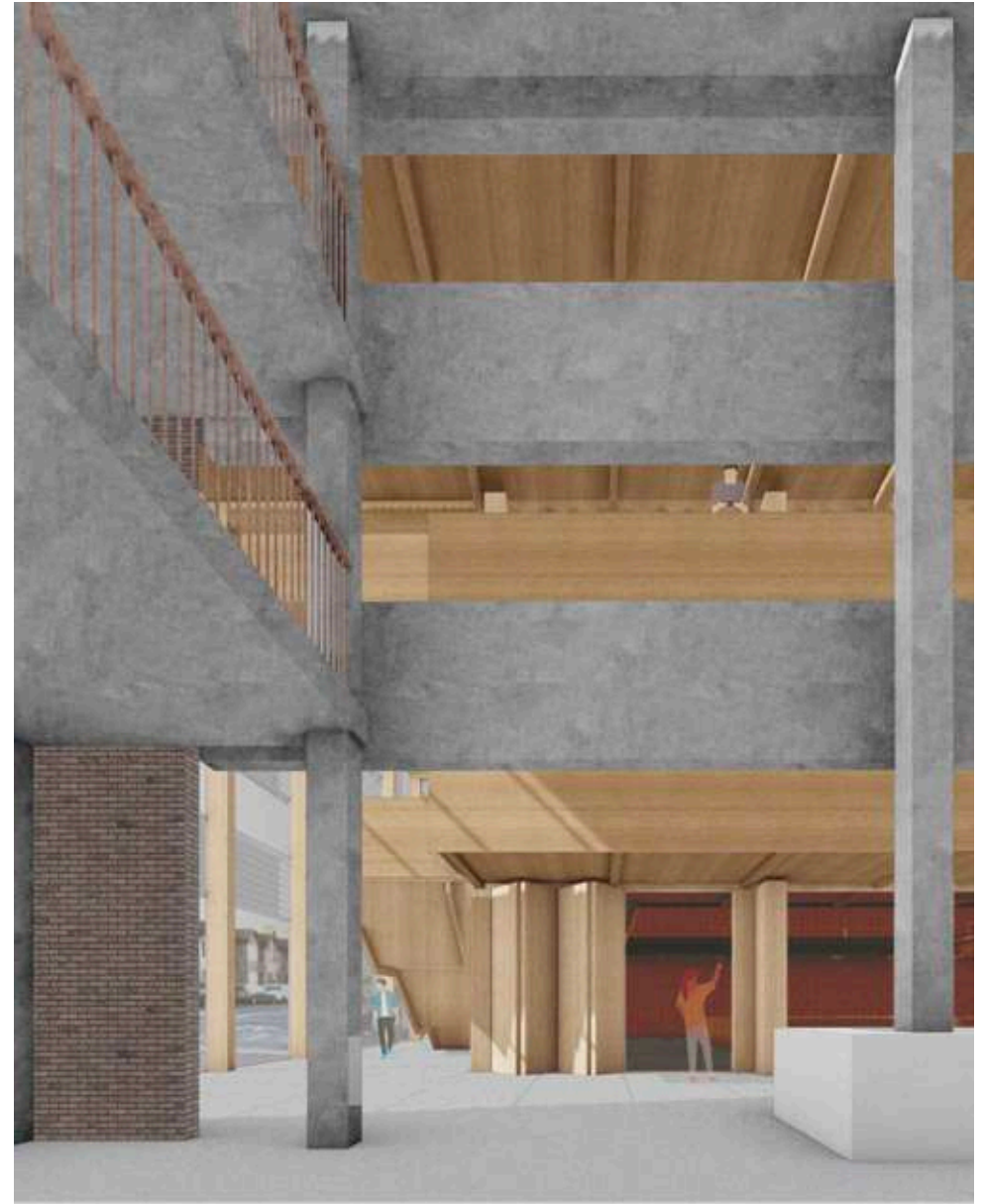
Fig 01-02: *Anti-monumental Theatre*, Stephan YauFig 03: *Anti-monumental Theatre*, Barbara NguenFig 04-05: *Anti-monumental Theatre*, Stephan Yau

01

Fig 01: *Anti-monumental Theatre*, Stephan Yau



01

Fig 01: *Anti-monumental Theatre*, Kyaw Aung

01

Fig 01: *Anti-monumental Theatre*, Kyaw Aung