

Studio 03

Students

Salma Chbani
 Adeola Onasanya
 Ana Hasa
 Diana Fazel
 Elisheva Epstein
 Faranak Gavahi
 Fatima Feggane
 Gaetano Coco
 Kesena-Brandon Ivego-Amayo
 Nilie Aatangen Wilhelmsen
 Olha Savchuk
 Oluwakorede Adesunloye
 Robert Grace
 Sezer Tahiroglu
 Valentyna Iakovleva
 Zaneta Ralska

Tutors

Studio 3
 Jane McAllister
 Andy Houlton

From Kitchen Cabinet to Public Room

Our study was situated at the intersection of Britannia Street and the disused subterranean railway cutting that once served Kings Cross Thameslink station. Through drawing and model-making, we conducted a detailed horizontal and vertical analysis of the site. We explored numerous cultural and material contexts encompassing occupancy, ravines, bridge connections, and cuttings. These elements testified to the passage of day and night, weather, maintenance, cleaning, patching, reuse, and occasional replacement. From our observations, we pose the question: how does food help communities situate their lives, and how, as architects, should we respond?

01 Kitchen Cabinet

Kitchen Cabinet proposed a small-scale building located at the edge of the site, transcending both underground and above-ground conditions. Working at several scales,

this provided a social, cultural, and material diagnosis of the site, engaging new thresholds and envelopes between, above, and below, connecting an assemblage of lives and activities through food.

02 Public Room

Using the same site but scaling up in use and tectonic complexity, the second project, Public Room for 100 people, challenged food growing, reuse, and distribution in the city, providing a fresh perspective on localism through nutrition knowledge and welfare.



01

Fig 01: Public Room, Gaetano Coco

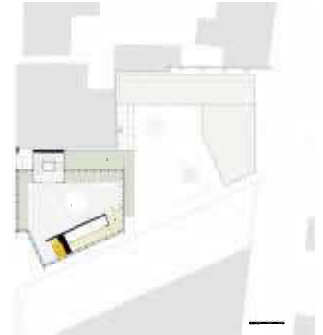


01

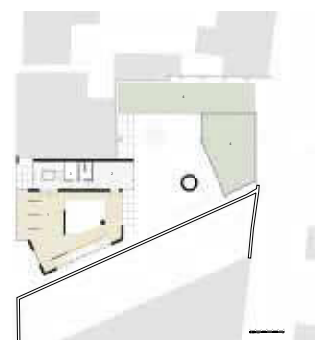


02

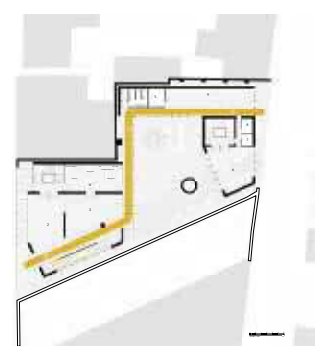
Fig 01-05: Public Room, Gaetano Coco



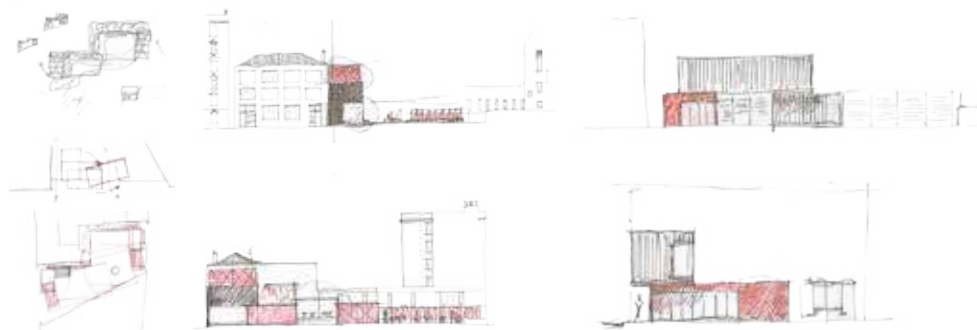
03



04



05

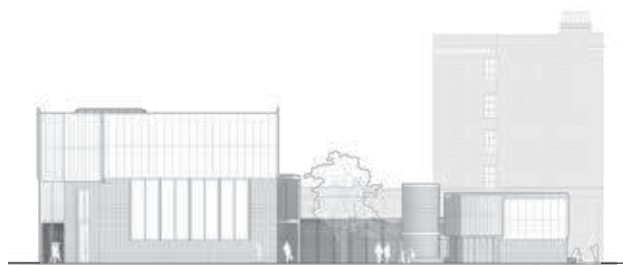


01

02



03



04



05

Fig 01-05: Kitchen Cabinet, Gaetano Coco



01



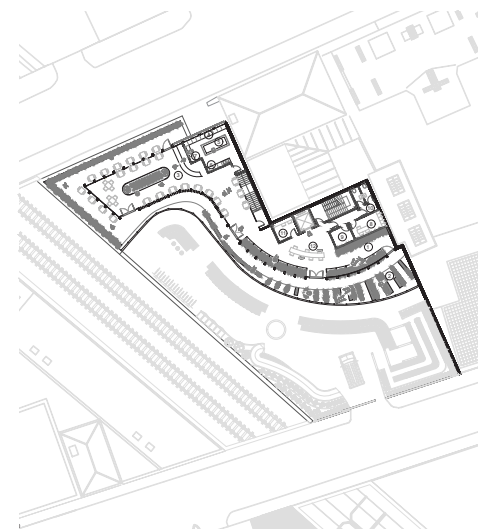
02

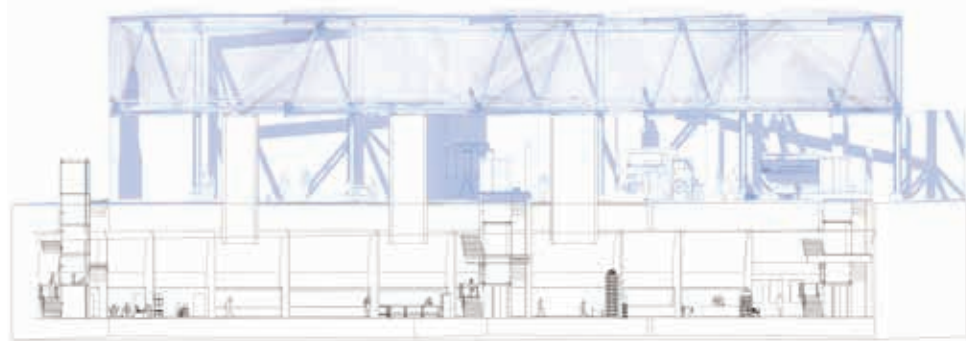


03

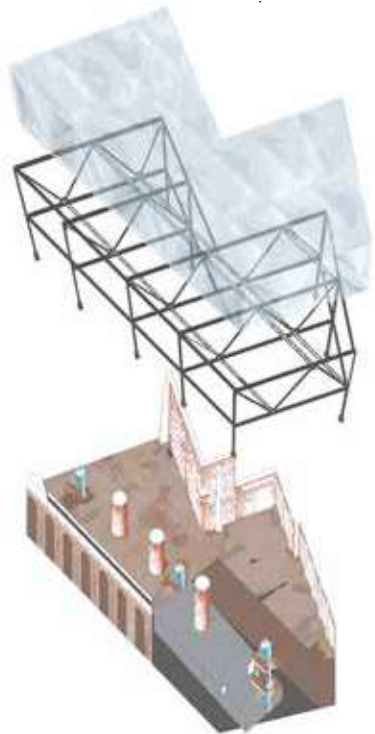
Fig 01: Public Room, Gaetano Coco
Fig 02-04: Public Room, Moein Memari

04





01



02

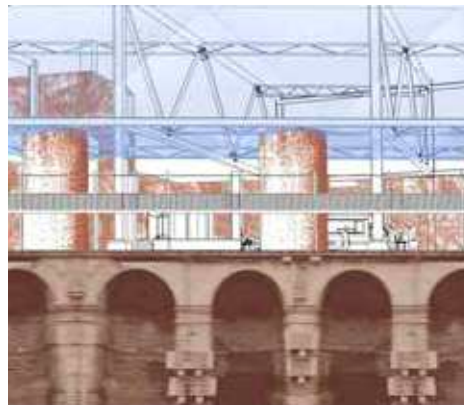
Fig 01-05: Public Room, Salma Chbani



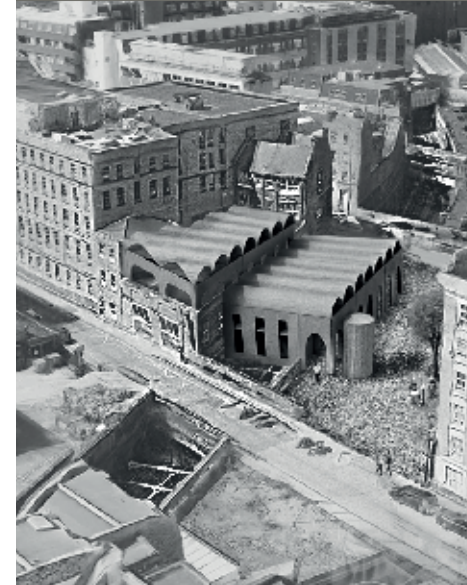
03



04



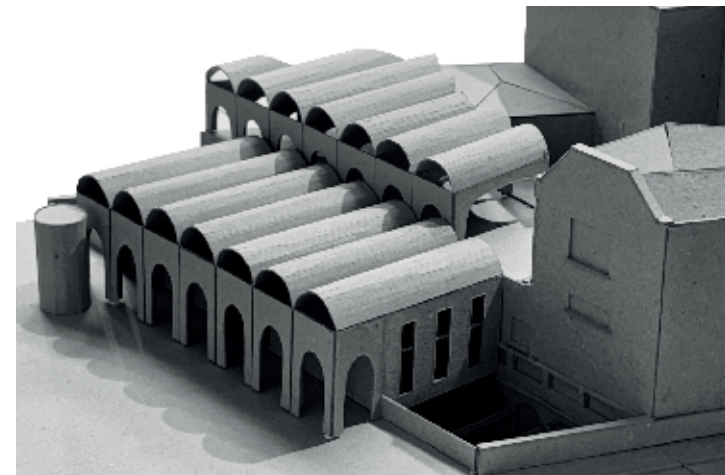
05



01



02



03

Fig 01-05: Public Room, Nilie Wilhelmsen



04



05



01



02



03



04



05

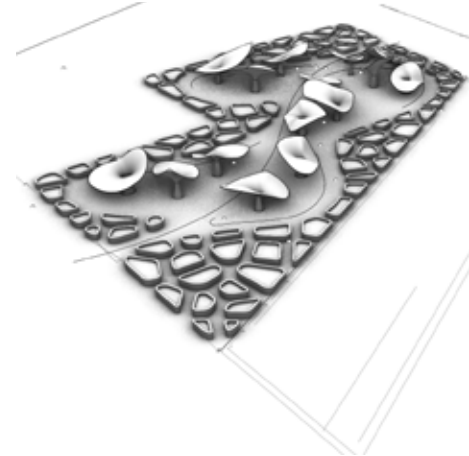


06

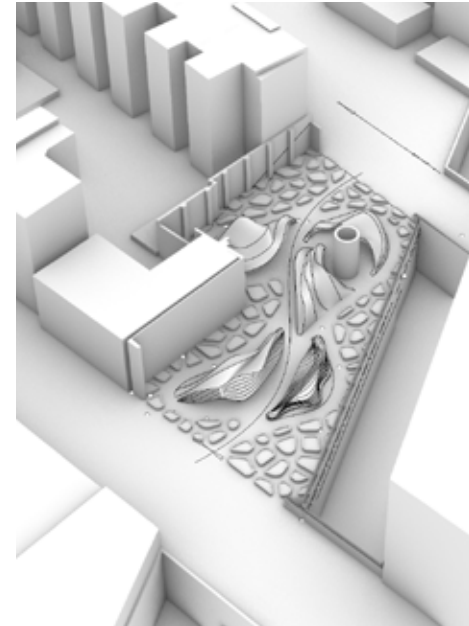


07

Fig 01-07: Public Room, Kesena Amaiyo

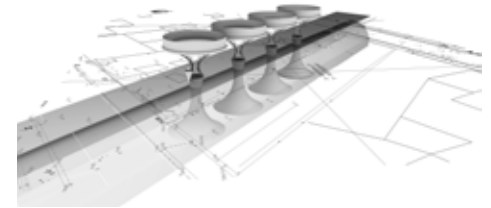


01

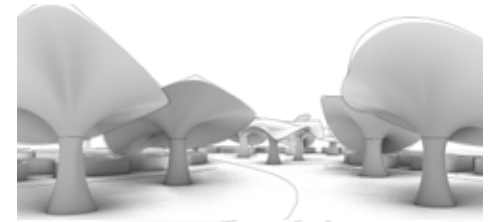


02

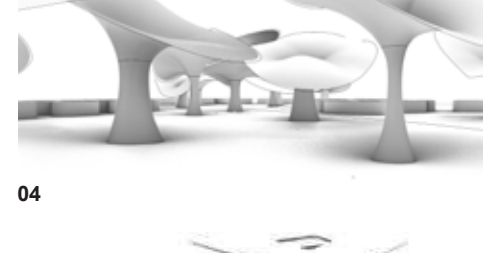
Fig 01-05: Kitchen Cabinet, Robert Grace



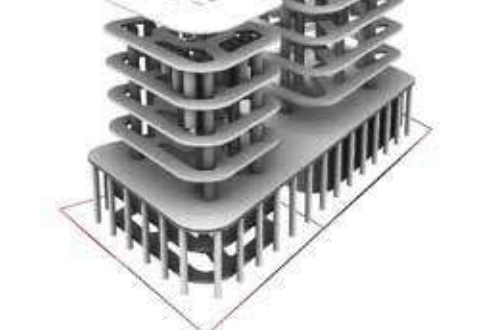
03



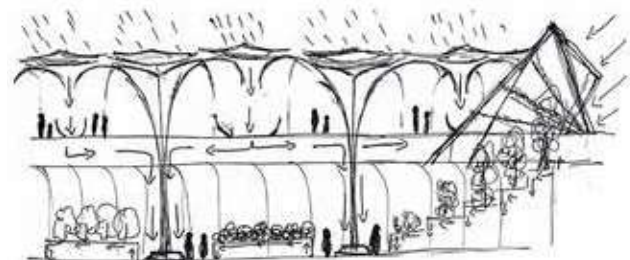
04



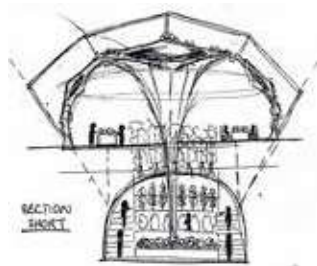
05



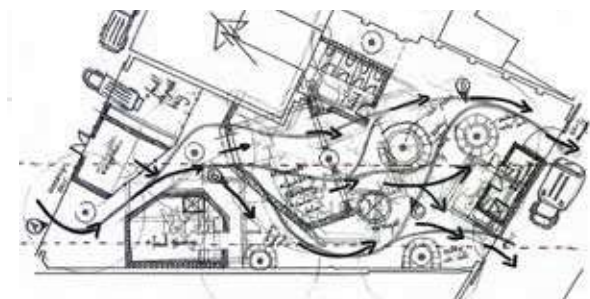
06



01



02



03



04



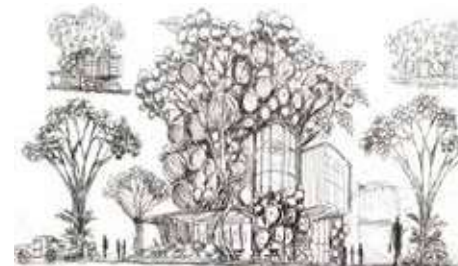
05



06

Fig 01-03: Public Room, Oluwakorede
Adesunloye
Fig 04: Kitchen Cabinet, Valentyna Iakovleva

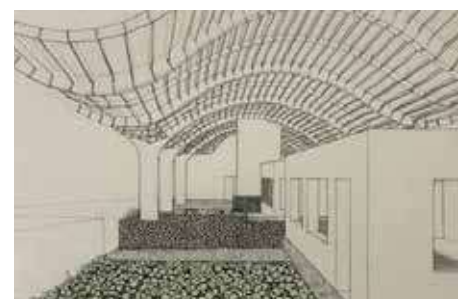
Fig 05: Public Room, Olha Savchuk
Fig 06: Public Room, Sezer Tahiroglu



01



02



03



04



05



06

Fig 01-04: Kitchen Cabinet, Olha Savchuk
Fig 05-06: Public Room, Sezer Tahiroglu