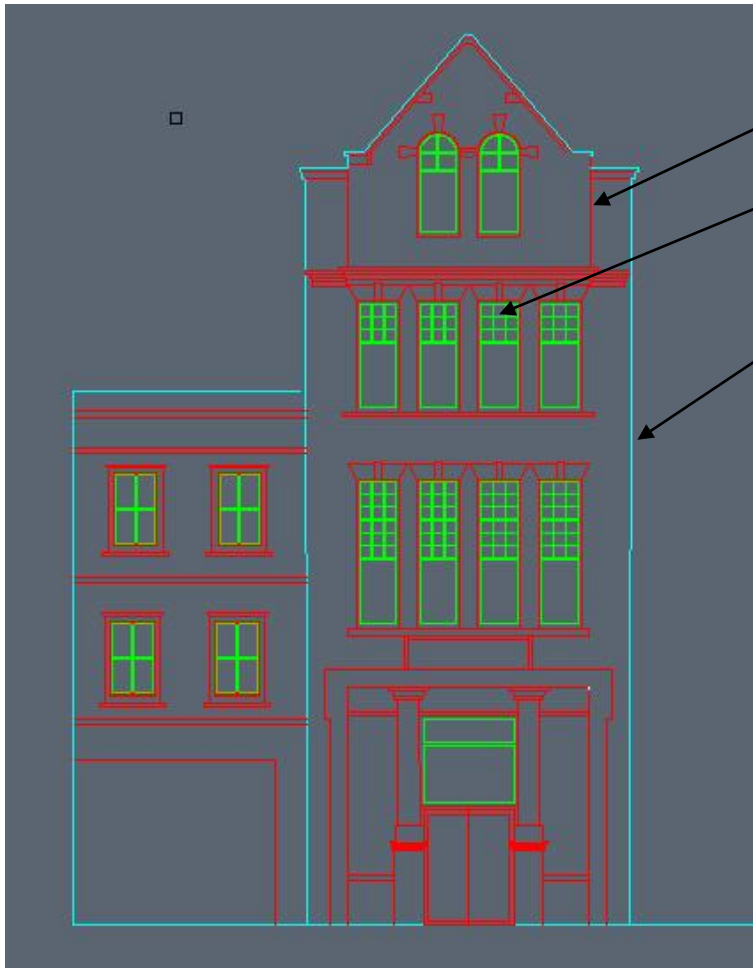


## Quick Guide to Preparing drawings for laser cutting



The drawing needs to be defined in certain colours as the laser cuts in colour order.

**Red** = Scribe line into the surface of the material

**Green** = internal cut line

**Blue** and

**Cyan** = external outline cut

There are more colours but stick to the above

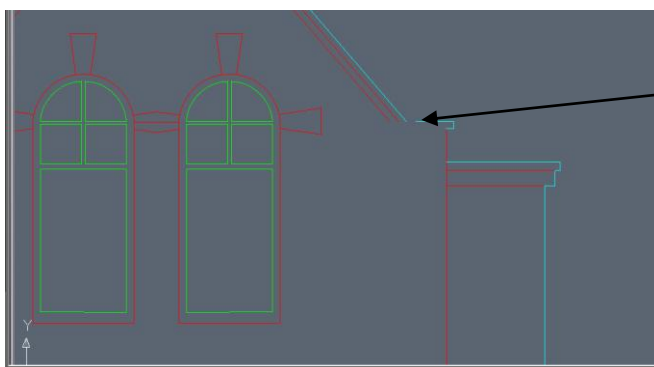
The colours have to be true colours not a variation, therefore red is red.

Remember the thickness of your material generally denotes the thinnest line you can cut e.g. If your material is 1mm thick then the thinnest line that you could cut out successfully would be 1mm.

All drawings should be DWG SAVED DOWN TO 2011 FOR THE BIG LASER AND 2004 FOR THE SMALL LASER

You can use any Cad package as long as you save it as a DWG

Please remember you will have to scale your drawings to model size before they are cut. You have to do this physically, just because the programme says you are drawing at a scale does not mean the drawing



Avoid gaps in drawing

Remember the laser cuts down the centre of the line, therefore if you have a line width of 2mm it will end up cutting at 1.8.

**DO NOT DRAW IN LINE THICKNESSES. DRAW IN THE MINIMUM SIZED LINE WEIGHT/PEN**

**DO NOT DRAW LINES OVER LINES. THIS WILL CAUSE THE LASER TO CATCH FIRE.**

MATHEW DART IS THE TECHNICIAN FOR THE LASER SIGN UP ON THE DOOR IN 516.