



# Welcome to London Metropolitan University!

[londonmet.ac.uk](http://londonmet.ac.uk)

   @LondonMetUni

## Tara Murphy

Senior International Officer (North America)  
Based in British Columbia

[usa@londonmet.ac.uk](mailto:usa@londonmet.ac.uk)

[Canada@londonmet.ac.uk](mailto:Canada@londonmet.ac.uk)

Leads on articulation agreements,  
recruitment and partner management in  
USA & Canada



## Sash Bhakoo

Deputy Head of International Development  
Based in London, UK

[s.bhakoo@londonmet.ac.uk](mailto:s.bhakoo@londonmet.ac.uk)

Leads on International full degree and  
transfer students.



## Articulation agreements

---

- **2+2** transfer agreements
- Students on pre-approved degrees will be eligible for advanced **entry into Year 2** of our 3-year Bachelor's.
- For programs that have not been evaluated for transfer agreements, our admissions team will evaluate them on an individual basis.

## Partnership support

---

- **£2000** International scholarship
- **£1450- £1950** USA Scholarship
- single point of contact at the university
- staff member based in North America
- attendance at transfer fairs
- virtual 1:1 sessions
- pre-departure sessions
- access to webinars
- bespoke support

## Articulation agreements steps

---

- Assess courses to see if a strong match
- Due diligence
- Course mapping to Year 2 entry
- Promoting opportunity

## Partnership Ideas

---

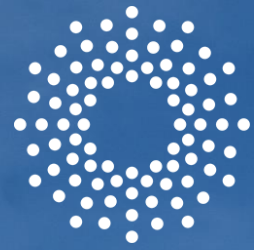
- Open to working with consortiums to articulate multiple courses across intuitions.
- Reviewing the scope to map articulations to state-wide transfer courses.
- Examining bespoke programmes

## Articulation agreements expression of interest

---

Link: <https://gck.fm/bxlfp>





LONDON  
METROPOLITAN  
UNIVERSITY



LONDON  
METROPOLITAN  
UNIVERSITY

## London Met Overview

- 2 campuses in central London
- 12,000 students
- 140+ nationalities
- Top 10 UK university for teaching quality and student experience <sup>(1)</sup>
- 9<sup>th</sup> in England for social mobility <sup>(2)</sup>
- UK university who has made the largest reduction in carbon emissions <sup>(3)</sup>





# Our locations

London is one of the most exciting cosmopolitan cities in the world. Situated right in the heart of the capital, our campuses are within easy reach of all of the capital's major airports and train stations, as well as all of the cultural activities the city has to offer.



Hampstead Heath

Luton Airport

Emirates Stadium

Stansted Airport

**Our Holloway campus**

Holloway Road Station  
A minute's walk from our campus

Camden Market

ZSL London Zoo

King's Cross St Pancras Station

The British Library

Madame Tussauds

The British Museum

**Our Aldgate campus**

Whitechapel Gallery

Queen Elizabeth Olympic Park

Paddington Station

Liverpool Street Station

London City Airport

The West End

St Paul's Cathedral

Hyde Park

Buckingham Palace

Big Ben and the Houses of Parliament

London Eye

Waterloo Station

A 15-minute walk from our Aldgate campus

Tower Bridge

Victoria Station



**Six Schools**

**Two Campuses**

**One London Met**

### **Guildhall School of Business and Law**

Accounting and finance | Business and management | Law | Languages | Marketing | Economics

### **School of Computing and Digital Media**

Computer science and applied computing | Digital media and communications | Communications, technology and mathematics | Creative technologies | Journalism

### **School of Human Sciences**

Biosciences | Sports science and therapy | Molecular and pharmaceutical sciences | Dietetics, food and nutrition

### **School of Social Sciences and Social Professions**

Criminology and sociology | Psychology | Politics and international relations | Child and woman abuse studies Social work | Education and young people | Health and social care

### **School of Art, Architecture and Design**

Architecture | Fine art | Design | Photography | English and creative writing

### **School of Built Environment**

Construction Management | Project Management | Quantity Surveying

# Undergraduate

## Art, Architecture and Design

Architecture  
Art and Design (including foundation year)  
Creative Writing and English Literature  
Fashion  
Fashion Photography  
Fashion Textiles  
Fine Art  
Graphic Design  
Illustration and Animation  
Interior Architecture and Design  
Interior Design  
Interior Design and Decoration  
Photography  
Product and Furniture Design  
Textiles  
Theatre and Film  
Theatre and Performance

## Business, Law and Languages

Accounting and Finance  
Advertising, Marketing Communications and Public Relations  
Airline, Airport and Aviation Management  
Banking and Finance  
Business Management  
Business Management and Human Resource Management  
Business Management and Marketing  
Criminal Law  
Economics  
Economics and Finance  
Economics, Finance and International Business  
Events Management  
Events Management and Marketing  
Fashion Marketing and Business Management  
International Business Management  
Law  
Law (with International Relations)  
Marketing  
Music Business  
Tourism and Travel Management  
Translation

## Social Sciences and Professions

Criminology  
Criminology and International Security  
Criminology and Law  
Criminology and Policing  
Criminology and Psychology  
Criminology and Sociology  
Criminology and Youth Studies  
Early Childhood Studies  
Education  
Health and Social Care  
International Relations  
International Relations and Politics  
Leadership in Communities  
Primary Education  
(two-year accelerated degree)  
Psychology  
Psychology and Sociology  
Social Work  
Sociology  
Youth Studies  
Youth Work

## Built Environment

Architectural Technology  
Construction Management  
Quantity Surveying and Commercial Management  
Real Estate

## Computing and Digital Media

Computer Networking and Cloud Security  
Computer Networking and Cyber Security  
Computer Science  
Computer Systems Engineering and Robotics  
Computing  
Data Science  
Digital Forensics and Cyber Security  
Digital Media  
Electronic Engineering and Internet of Things  
Fashion Marketing and Journalism  
Film and Television Production  
Film and Television Studies  
Games Animation, Modelling and Effects  
Games Programming  
Journalism  
Journalism, Film and Television Studies  
Mathematical Sciences  
Mathematics  
Media and Communications  
Media and Marketing  
Music Technology and Production

## Human Sciences

Biochemistry  
Biological Science  
Biomedical Science  
Chemistry  
Dietetics  
Dietetics and Nutrition  
Forensic Science  
Human Nutrition  
Medical Bioscience  
Nursing (Adult)  
Pharmaceutical Science  
Pharmacology  
Physiotherapy  
Sport and Exercise Science  
Sport Psychology, Coaching and Physical Education  
Sports Therapy

[Link to courses](#)

# Postgraduate

## Art, Architecture and Design

Architect Apprenticeship (Level 7) (RIBA Part 2 and Part 3)  
Architecture RIBA 2  
Architecture: Professional Practice in  
Architecture RIBA 3  
Creative, Digital and Professional Writing  
Design for Cultural Commons  
Environmental, Sustainable and  
Regeneration Design  
Fine Arts  
Furniture Design  
Interior Design  
Jewellery and Silversmithing  
Photography  
Product Design  
Public Art and Performative Practices  
Textile Design  
Visual Communication: Graphic Design  
Visual Communication: Illustration

## Business, Law and Languages

Airline and Airport Corporate Management  
Anti-Bribery and Anti-Corruption Law and Compliance  
Conference Interpreting  
Corporate Social Responsibility and Sustainability  
Doctor of Business Administration  
Employment Law and Practice  
English Language Teaching  
Fashion Marketing and Management  
Financial Services Law, Regulation and Compliance  
Global Human Resource Management  
Graduate Diploma in Law  
Human Rights Law  
International Accounting and Finance  
International Banking and Finance  
International Business Management  
International Business Management with Project Management  
International Events, Leisure and Tourism Management  
International Trade and Finance  
Interpreting  
Legal Practice  
Maritime Law  
Marketing  
Master of Business Administration  
Specialised Translation  
Translation  
Translation Technology

## Social Sciences and Professions

Addiction and Mental Health  
Qualified Teacher Status  
Child and Adolescent Mental Health  
Climate Security: Humanitarian - Development -  
Peacebuilding  
Counselling and Psychotherapy  
Crime, Policy and Security  
Criminology  
Criminology and Psychopathology  
Education  
Health and Social Care  
Leadership and Management  
Human Rights and International Conflict  
International Relations  
Organised Crime and Global Security  
Peace, Conflict and Diplomacy  
PGCE Primary (3-7/5-11/7-11 [Key Stage 2])  
PGCE Secondary (with subject specialism)  
Psychology  
Psychology of Mental Health  
Public Health  
Social Work  
Woman and Child Abuse  
Youth and Community Work (Advanced Practice) also  
available with JNC Recognition

## Built Environment

Construction Project Management  
Quantity Surveying  
Real Estate

## Computing and Digital Media

Artificial Intelligence  
Computer Networking and Cyber Security  
Cryptography  
Data Analytics  
Digital Media  
Documentary Film Production  
Robotics with Artificial Intelligence

## Human Sciences

Biomedical Science  
Biomedical Studies  
Blood Science  
Cancer Immunotherapy  
Cancer Pharmacology  
Dietetics and Nutrition  
Food Science  
Human Nutrition  
Medical Genomics  
Pharmaceutical Science and  
Drug Delivery Systems  
Physiotherapy (Pre-registration)  
Sports Therapy

[Link to courses](#)

# How studying at London Met works

## Course structure

Undergraduate courses take 3 academic years to complete. Typically students start September (with some courses available for January start). Students specialise in their subject from day one.

---

### Year one

Students start their course from year one as there are no general education requirements. Within the first year, most modules are core and the timetable is created for the students. This year will introduce the key areas of the subject. Typically grades from the first year will not count towards final mark, however, students must pass, and for particular activities (e.g. study abroad) may need specific grades

### Year two

Students continue to specialize within their subject area. A variety of core and optional modules are available to suit the student's interests. Work experience modules either in 2<sup>nd</sup> or 3<sup>rd</sup> year.

### Year three

Student specialize further in their subject, completing a large project or dissertation in an area of their choice. Additional optional modules to select from. Work experience modules either in 2<sup>nd</sup> or 3<sup>rd</sup> year.

### Transfer Students

Student articulate directly into year two.



I also got involved in a project on obesity in two London communities, trying to understand what made them eat certain things.



**Denise Morrison**

Jamaica/UK

MSc – Health and Social Care  
Leadership and Management

## Course style

The UK and London Met's education style encourages critical thinking and independent work. Students have less class time than in North America however are encouraged to complete more and deeper independent work.

---

## Teaching

Teaching takes place in large lectures, smaller seminars and in lab and practical classroom. Students are encouraged to discuss and debate topics. All undergraduate courses have work experience designed into their courses.

## Assessment

A variety of assessments take place including exams, essays, dissertations, projects, presentations and more. Students will typically have a lower volume of assessments compared with North America however they will carry a higher grade weighting and require more time and effort.

## Grading

The UK grading system is used across all undergraduate institutions. Direct comparisons are difficult but an example can be found below.

Degree Class	Percentage score	Equivalent
First-Class (1 <sup>st</sup> )	70-100%	A
Upper Second class (2:1)	60-69%	A-/B+
Lower Second class (2:2)	50-59%	B/B-
Third class (3 <sup>rd</sup> )	40-49%	C
Fail	0-39%	F



Here, you have more of an opportunity to build a relationship with your teachers and get to know them.



**Hailey Savage**  
Kansas City  
BA Architecture

## Timetable structure

The academic year typically runs from September – June, with some courses available for January start. Postgraduate students continue a summer semester for teaching and research as they follow a 12-month calendar.

---

### Autumn (Fall) Semester

Teaching from September to mid-December

Winter vacation from mid-December until early January

Examinations from mid to late January

### Spring Semester

Teaching from late January to March, returning after easter until early May

Easter vacation around 2 weeks in April (depending on easter dates)

Examinations from early May until early June

### Summer Vacation

Early June until mid-September

“

My first day at London  
Met was scary, but  
everyone was welcoming.



**Dinni Musa**

Tottenham, London  
BSc (Hons) Digital forensics and  
cyber security



## Cost

As undergraduate degrees only take 3 years to complete, students can often save on the additional year of living/ tuition fees and earn a graduate wage faster.

---

### Tuition fees

£15,950 - £21,450 per academic year  
approx. USD \$20,000 - \$27,500  
approx. CAD \$27,500 - \$37,000

### Academic fees

Students are not typically expected to spend any additional fees related to their studies, such as books. They may need to buy some material for art projects etc.

### Living costs

Accommodation approx. £125- £500 per week  
Estimated £1334 per month, including accommodation, bills, food, travel etc.

### Scholarships and financial aid

£2000 International Bright Futures scholarship (tuition fee reduction)  
£1450- £1950 USA Global Horizons Scholarship (tuition fee reduction)  
Additional scholarships  
US federal aid  
Canada provincial financial aid (varies per province)



If you know what degree you want to study, then definitely go to the UK; it's more affordable, it takes less time and you don't have to take general classes



**Daniela Kroning**

Hawaii, USA

BA - Interior Architecture and  
Design

# Experience The Real London

London's  
Vibrant  
Inspirational  
**Metropolitan**  
University

## London Met in numbers

143 distinct nationalities  
12,000 students  
200 courses  
14 subject areas  
6 schools  
82% undergraduate  
18% postgraduate  
63% people of color  
13% known disability  
97% students from a disadvantaged background  
82% mature students (over 21)

[londonmet.ac.uk](http://londonmet.ac.uk)

   @LondonMetUni



London Met's like an international football tournament. Everyone comes from different corners of the globe to win the World Cup.



**Aaron Patel**  
Edmonton, UK  
BA (Hons) Journalism

## Race Equity Strategic Plan

2020 opened our Centre for Equity and Inclusion

2021 launched our Race Equity Strategic Plan,

[HBCU partnerships](#)

Diversity scholarships

**£15**  
million

London Met commitment to drive racial  
justice and equality

[londonmet.ac.uk](http://londonmet.ac.uk)

   @LondonMetUni



For me, it's so important to help people of colour break barriers, because you see so many injustices in the world today where students, staff and colleagues are not given opportunities or supported.



**Chrystalle Margallo**  
Philippines/ London  
BA International relations



Holloway Road Campus



# Holloway Road Campus North London

[Holloway Campus Tour](#)



London Met's Super Lab, one of Europe's largest teaching labs!

Library, free gym, Student Union

Next to Emirates Stadium (Arsenal FC)



Modern tech facilities

All subjects (excluding art and design)



LONDON METROPOLITAN UNIVERSITY

LONDON METROPOLITAN UNIVERSITY

LONDON METROPOLITAN UNIVERSITY

**Aldgate Campus**



# Aldgate Campus: East London

## [Aldgate Campus Tour](#)

15 min walk from tower bridge

Rich in history and immigration.

Fusion of ancient & modern.

The creative hub of London.

### **School of Art, Architecture & Design:**

Fine Arts, Theatre, Fashion, Textiles, Graphic Design, Interiors, Architecture, Photography, Creative Writing





## Accommodation Options

### Student Community Halls of Residence:

- Network of local university students
- Private flats/shared flats
- Private bathroom/shared bathroom
- All utilities included
- Shared or private kitchen
- Option for academic year only lease

### Independent Flatshare:

- Student Pad, Spare Room, Gumtree
- Select your accommodation roommates
- Rent can be charged per week or monthly



## Access

---

- Work experience embedded in the curriculum for all courses
- Accelerator – London Met's business incubator
- Law - Pro bono clinic
- Charities and social enterprise clinic
- Newsroom
- Interpreting suite
- SuperLab
- Bloomberg trading room

## Support services

---

- Counselling and welfare
- Disabilities and dyslexia service
- Career and employability advice
- Accommodation bureau
- Academic subject librarians
- Mental health support
- NHS access (health services)
- International advice team
- Security team

## University social life

---

- Welcome week social programme
- Student's Union events
- Clubs and societies
- Radio station and magazine
- Sports teams
- Free gym
- Fitness classes
- The Rocket – student venue



## Student Life in London

- QS Rankings [#1 Student City in World](#)
- Metropolitan, global experience!
- - Public transport / walkable
- - Parks (technically a forest!)
- - Historical culture
- - Free museums
- - Thriving music scene
- - Amazing arts community
- - Outdoor recreation
- - Student discounts (concession rate!)

[londonmet.ac.uk](http://londonmet.ac.uk)

   @LondonMetUni



London is the higher education capital of the world, with more leading universities and international students than any other city and I want to make sure it stays that way



**Sadiq Khan**  
Mayor of London  
**London Met Alumnus**

## Other Perks of UK Student Life

- Classmates from around the world
- Global perspectives
- Access to Europe
- UK train and bus network
- Concessions (student discounts!)

[londonmet.ac.uk](http://londonmet.ac.uk)

   @LondonMetUni

“ Since starting my course I  
have visited five  
countries.



**Anthea Ojadi**  
Texas  
MSc – Public Health

## Useful links

- [Website](#)
- [Students from USA](#)
- [Students from Canada](#)
- [Courses](#)
- [Scholarships](#)
- [US Financial aid](#)
- [Visa and immigration](#)

[londonmet.ac.uk](http://londonmet.ac.uk)

   @LondonMetUni



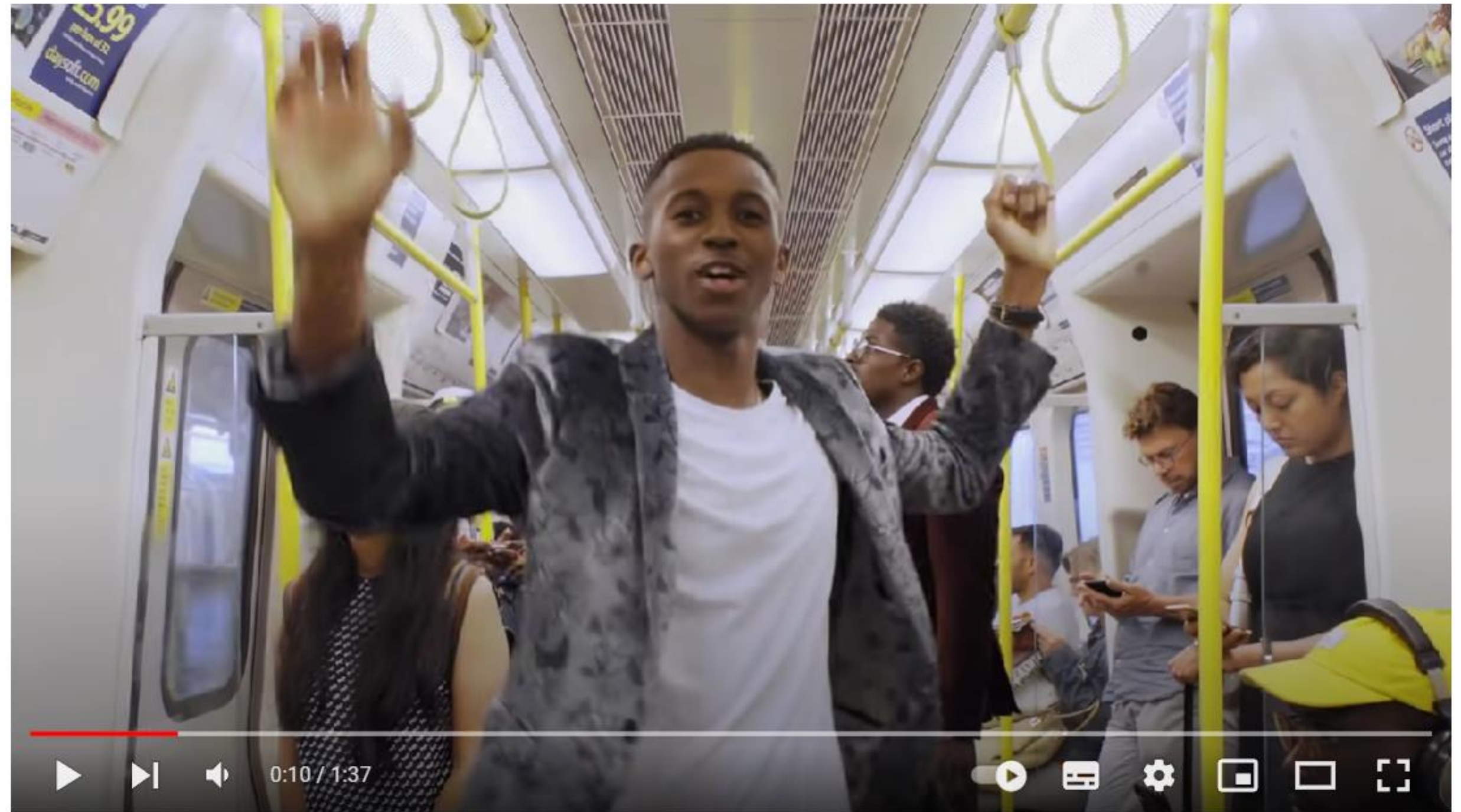
*I'm grateful for the exposure  
to new cultures,  
backgrounds, and ways of  
life.*



**Nora Aburto**  
Chicago  
MBA – Data Analytics

YouTube Virtual Tour:  
*London Met*

*"Do Something You Love"*



Do something you love



London Metropolitan University  
6.91K subscribers

Subscribe

261





Share

Download

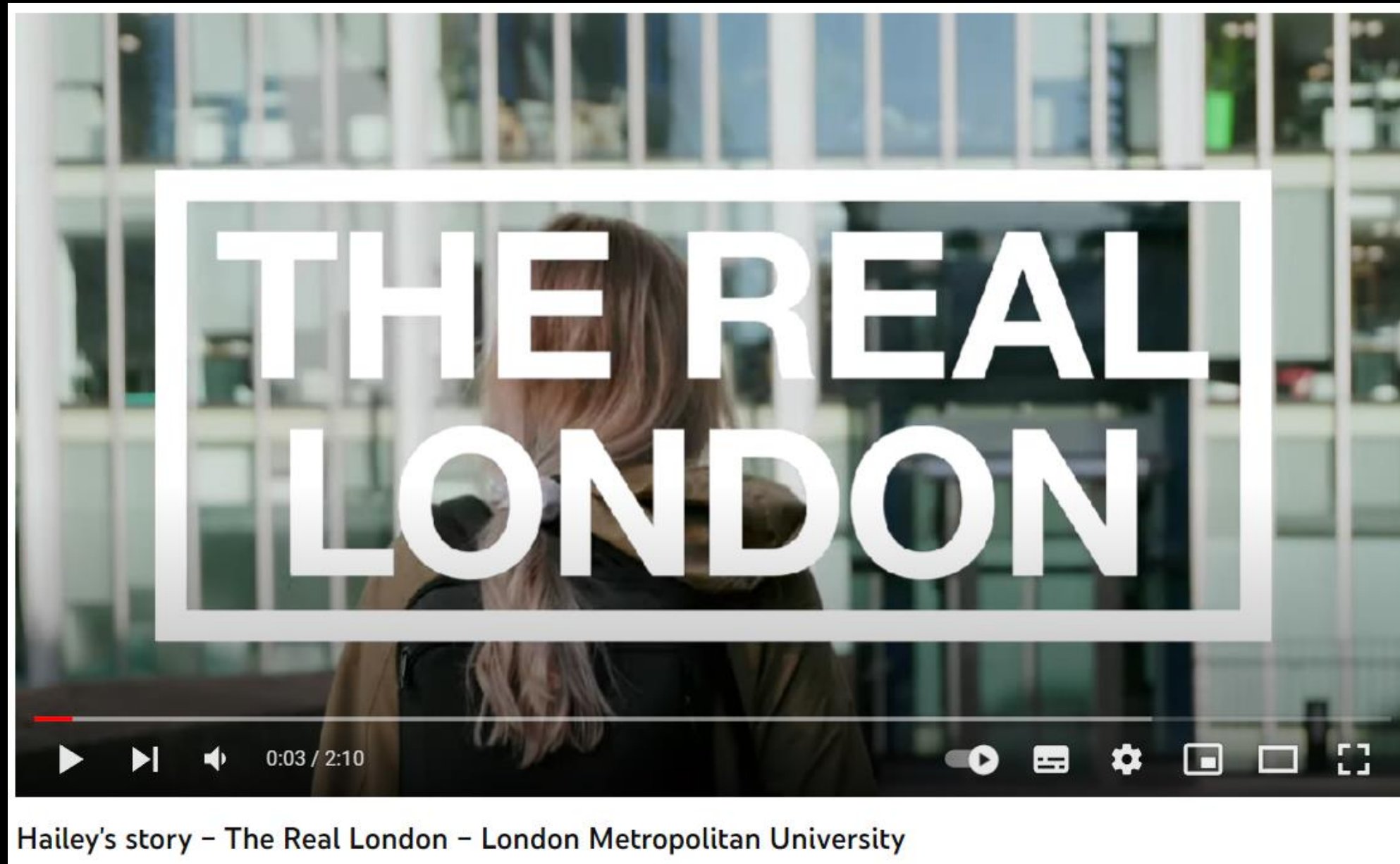


1M views 4 years ago

[londonmet.ac.uk](http://londonmet.ac.uk)

   @LondonMetUni

# What our students say



“I'm from [Kansas City](#) – kind of a farm girl, but I wanted to move to a bigger city to practice architecture. There are things that I appreciate from being from a small town – but when I moved here, I realized that the world is much bigger than this small-town mindset. Living in a bigger city, your mind opens quite a bit to the possibilities of what you can do with your life.”

**Hailey Savage**



“I chose London Met because it had an **engaging and specialised master's program** that inspired me!

I have really benefited from the **small class sizes** at the MA level. It has helped me to become more responsible in my studies, and contribute to discussions and seminars.

I was thrilled to know that London Met was located in close proximity to **London's city centre**. I knew I would be able to access everything I needed during my studies in a city hub like London and feel well connected should I want to travel, take part in extracurriculars and meet new people.”

“

I was able to find a volunteering position to complement my studies and get to know those in my community.



**Jerina Forestall**

Canada

MA – Organised crime and  
global security

London Met itself is a great university with such a diverse culture and professors who are **dedicated to helping students succeed** in every way. Of course, as a master's student, a lot of our learning is a mix of independent studies and group work, so it is important to utilise every resource available if you want to succeed. You can do it!

London is a wonderful connection to other parts of Europe; travelling is so much easier than you would think. **Since starting my course I have visited five countries.** As my fellow Americans know, traveling to a different country from the US requires months of planning and expenses that sometimes seem out of reach. The fact that I could go and come back from Paris in one weekend for under \$100 is mind blowing!



London is such a lively city with so much to do. You will definitely find your niche.



**Anthea Ojadi**  
Texas  
MSc – Public Health

“Like most students, I decided to visit the University on one of its open days. I was not sure if I wanted to study. You see, I'm older than most students, and **I always thought that studying had an expiry date.** When I entered the room, I saw people of different ages, nationalities, backgrounds. I saw a room full of colour. I saw people who have grandkids, being there because they wanted to study.

I sat down with Professor Simon Cadman and we had a fantastic chat. I still remember that Simon never treated me as a customer. **He had a genuine interest in me,** my background, my experiences. I felt appreciated; I felt welcome. I felt sure that if I were going to study, London Metropolitan University would be the place where I would go to do it. Two years later, there has never been a moment to regret my decision.

For me, London Metropolitan University is the place where I have **regained my self esteem.** It is the place where I've met some great people who I consider friends. People who share difficulties, struggles, disappointments. Situations that brought us together. I met lecturers who believe in me and keep pushing me to achieve the very best of me. It's an environment where I feel comfortable, safe and respected. It's a place where I've met people who have faith in me, and that drives me to become better and better.”

“

Being a student rep and representing all of my fellow students, sharing their concerns, being happy with their achievements. It's something that only someone who studies at London Metropolitan University can fully understand. It's a lifetime experience.



**Nikos Papanikolaou**  
Athens, Greece  
BA Journalism

“I'm the **first in my family to go to university**. So I didn't have anyone to lean on for that experience. I remember walking in and being mortified, and thinking, this is either going to go really well or it's not. But it was a memorable first day. I'll always remember it for how far I've come.

In my first year, I was a writer for the Students' Union on *Verve Magazine*. Then the Editor in Chief left, and she asked me to take over, which was **bucket list** for anyone.

I also had my own show on Verve Radio in the first year. I trained people for the second and third year, which was a lot of fun. It gave me a lot of transferable skills. Before uni, I was never really a people person, but it allowed me to **become so much better with people**. I had had very few life experiences before uni, beyond my own town.

I've always felt London Met has a very unique feel and brand to it. It's not your typical big university. It's a **community university** – there's a really good atmosphere to it.”



London Met's like an international football tournament. Everyone comes from different corners of the globe to win the World Cup.



**Aaron Patel**  
Edmonton, UK  
BA (Hons) Journalism

“I chose London Met for the superior facilities and **top-notch liberal arts modules** offered. I was immediately attracted to the unique education opportunities offered with successful professors in my industry.

My favorite aspect of my course was my London Met professors. I feel incredibly grateful to have had professors with such relevant and laudable working experience. As a journalism major, I was awestruck by my **professors’ past careers**. Both of my journalism professors have worked at massive and reputable media sources such as *The Guardian*. They also ran successful blogs, acting as role models for me to start my own.

I was grateful to **leave with portfolios** in both fashion journalism and data journalism that I could use to show future employers regarding my specialised abilities.”

“ The overall campus has a very modern feel which I was a fan of.



**Rachel Gasparini**  
United States  
BA (Hons) Journalism

“I grew up in Tottenham – my family came over from Somalia during the civil war in the nineties. My parents have a lot of expectations for me – they want their first-born child to **succeed**. My entire family were really happy and proud that I got into university. I also have to set the bar for my siblings.

My first day at London Met was scary, but everyone was welcoming. I studied computer forensics and cyber security for my undergrad here, and for my master’s I studied computer networking and cyber security. I **really loved this course**.

I think that's what London Met facilitates; you can learn a lot about yourself and about the new people that you're meeting. That's what I love about London Met: the fact that I met so many interesting people. This University is really important to me. There are a lot of initiatives surrounding inclusivity and diversity. I think it was really good that they created a **Centre for Equity and Inclusion**. I haven't seen that at any other institution. I think London Met was one of the first institutions that started to cultivate this sort of thing.”



I came here on a school trip when I was 14. I saw the vibe of the University and how diverse it was. I guess it sparked something.



**Dinni Musa**

Tottenham, London  
BSc (Hons) Digital forensics and  
cyber security

“If you are a soccer fan, you should know that our university is literally in front of the Emirates Stadium (Arsenal Football Club) and when it is a game day, you will know! Hours before the game starts, people go to the local bars to chant and cheer for their team.”

(US veteran studying through VA Education Benefits)

“ and when it is a game day, you will know!



**Migel**  
California, USA  
BS (Hons) Digital forensics  
and cyber security