



## Workshop

Whitechapel High Street  
London  
12-16/12/2011

# Hidden Space



With the support from

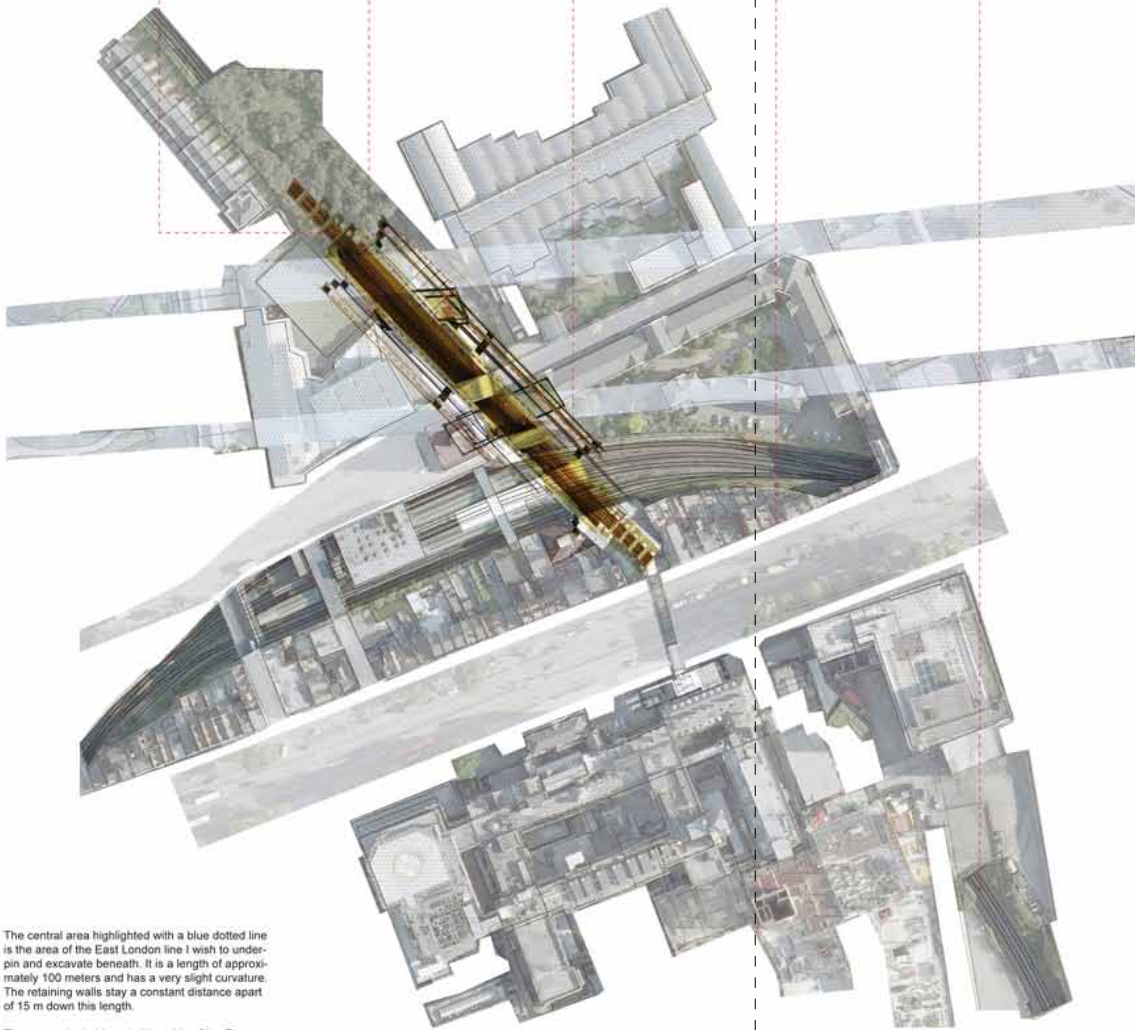
### Ambitions

The Workshop focuses on the area around Whitechapel – a fringe of the city swayed gently by autonomous development, property speculation and the steady decline in industry.

These fluctuations have left the area with a strange accumulation of leftover space, service networks and incomplete urban narratives. By drawing the actuality of this Bataillean 'dust', the students will first compile a matrix of spatial fragments, and focus one particular site of their choice to speculate on their socio-spatial potential whilst reinterpreting the city as a catalogue of beautifully incomplete objects.



Michael Griffiths, AA project



The central area highlighted with a blue dotted line is the area of the East London line I wish to underpin and excavate beneath. It is a length of approximately 100 meters and has a very slight curvature. The retaining walls stay a constant distance apart of 15 m down this length.

The areas shaded in red either side of the East London line indicate the worksite areas which can be occupied for the underpinning and excavation processes.



Reconstituted brick in retaining wall

Bridge to be removed between retaining walls

New concrete bridge spanning retaining walls

New concrete track bed laid on ground surface

Precast concrete platforms and steel walkways

Whitechapel Road/London

01\_Presentation

London Team, Paris Team, Lecturers

02\_Program

Events and timetable

03\_Walk 1

South Bank / Richter at the Tate, National Theatre by D. Lasdun

04\_Walk 2

OMA Progress, Barbican Centre

05\_Brief

Experimenting through making

06\_Useful

Links, Adresses, Email contact

01\_Presentation

London team

Paris team

Lecturer

# LondonMet

**Tutors**  
**Students**



**Kaye Newman, Director of the program**  
k.newman@londonmet.ac.uk



**Jannette Harris, Lead tutor**  
j.harris@londonmet.ac.uk



**Jérôme Picard, Lecturer**  
info.landset@yahoo.co.uk



Agathe Oury, Christina Rech and Maya Fabri



Camilla Chung



Lois Woodgate and Christopher Crawford Kelly



Samaneh Khazaei



Sara Mitrova and Sabrina Durant



Shahzad Akhtar and Gabriella Ramacciotti

Lost in Whitechapel road Market, but here for the workshop :  
Buket Kutlu  
Lina Navickaite  
Veronika Lovasova  
Juna Margariti  
Farida Hasan  
Monika Krzyzanowska

# Ecole Boulle

## Tutors Students



Valerie de Calignon



Erwan Lebourdonnec



Bruno Rosenzweig



Roland Lemoine



Christelle Bernard

DSAA1 AI



Auffret Amélie



Augé Julie



Bondé Manon



Denais Lucie



Bardet Lauranne



Bernicchia Eléonore



Bernicchia Eponine



Bolevin Oriane



Dugeai Claire



Fernon Anais



Gastebois Solène



Havet Thomas



Bosch Rémi



Brion Théa



Buchon Typhaine



Garcoa-Iozalo Camille



Jacamon Louise



Keischgens Lara



Lopez Moea



Maison Flora



Gardin Juliette



Gudefin Mathilde



Hernandez Clémentine



Jabbour Aude



Seneclauze Adeline



Rouleau Solène



Mercadié Pierre-Alexandre



Roginski Slovia



Mercadié Pierre-Alexandre



Roginski Slovia



Rouleau Solène



Seneclauze Adeline

DSAA2 AI

# Lecturers

## Tom Jones

Tom Jones will be showing us the workshop site on the first day and explaining the context and development of the active Olympic site where the project of Stratford city and the Westfield shopping centre plays a key role.

As an Associate Principal of Populous, Tom has worked on a number of projects, including the design proposals for the Viv Richards Stadium in Antigua as part of the 2007 ICC Cricket World Cup. He has also played an important role in the design of the Emirates Stadium, the new home ground for Arsenal FC. After leading the design and tender phases of the new Headquarters building for the club, Tom was responsible for delivering the final construction stages of the main stadium – on budget and ahead of time.

Tom joined the London Olympic Stadium team, taking responsibility for design delivery and securing planning permission for the project. This involved coordinating the work of a large design team, as well as undertaking extensive public consultation on the design proposals.

Tom is now responsible for managing business development in the London office of Populous and has spoken at a range of conferences and events around the world. He is a guest tutor at London Metropolitan University and is driven by an ambition to design and realise responsible, dynamic architecture - based on specialist research that he has undertaken in environmental design and sustainable architecture.

## Peter Sheard

They will kindly be visiting us during the workshop to get more insight on this English-French collaboration.

Peter Sheard is the practice area leader for the Gensler landscaping studio. He has over 25 years professional experience in landscape architecture and urban design and forms part of the multidisciplinary master planning team. He works closely with Gensler's architects and workplace designers to develop schemes for public realm spaces including public squares, streetscapes, parks, atria, roof gardens and interior spaces. Peter's in-depth knowledge of the landscape planning process and sustainability ensures that his designs for architectural developments are fully integrated into their natural surroundings.

## Enrico Caruso

As a Regional Design Leader for Europe, Enrico makes ongoing contributions to Gensler's Firmwide Design Leadership group to develop best design practices across the firm. He has led teams on major interior design projects for multinational corporations in the United Kingdom, Canada, Europe and the Middle East.

He is a guest tutor at the London Metropolitan University and sits on the Industry Advisory Board for Ravensbourne College of Design and Communication. He is a valued design mentor for junior staff and actively involved in the recruiting and development of some of the best talent available in the industry

## Jerome Picard

Jerome Picard will be giving more details of the urban development of the East London during the workshop and the site visit

Jerome Picard is currently working with S333 where he is developing his experience of architect/urban planner, after completing a Master in Housing and Urbanism at the Architectural Association, focusing on spatial strategies enabling Innovation environment in complex urban context.

Between 2007 and 2009, Jerome worked as an architectural designer with Dominique Perrault Architecture where he was involved in multiple scale projects. His collaboration includes major educational and public commissions, such as the EWHA University campus in Seoul, the European Court of Justice in Luxembourg and the Tennis Centre in Madrid. Conjointly, He led several design creations such as Lemma chair and Quartetto vases for Sawaya and Moroni, edited for the Biennale of Milan 2008 and 2009.

02\_Program

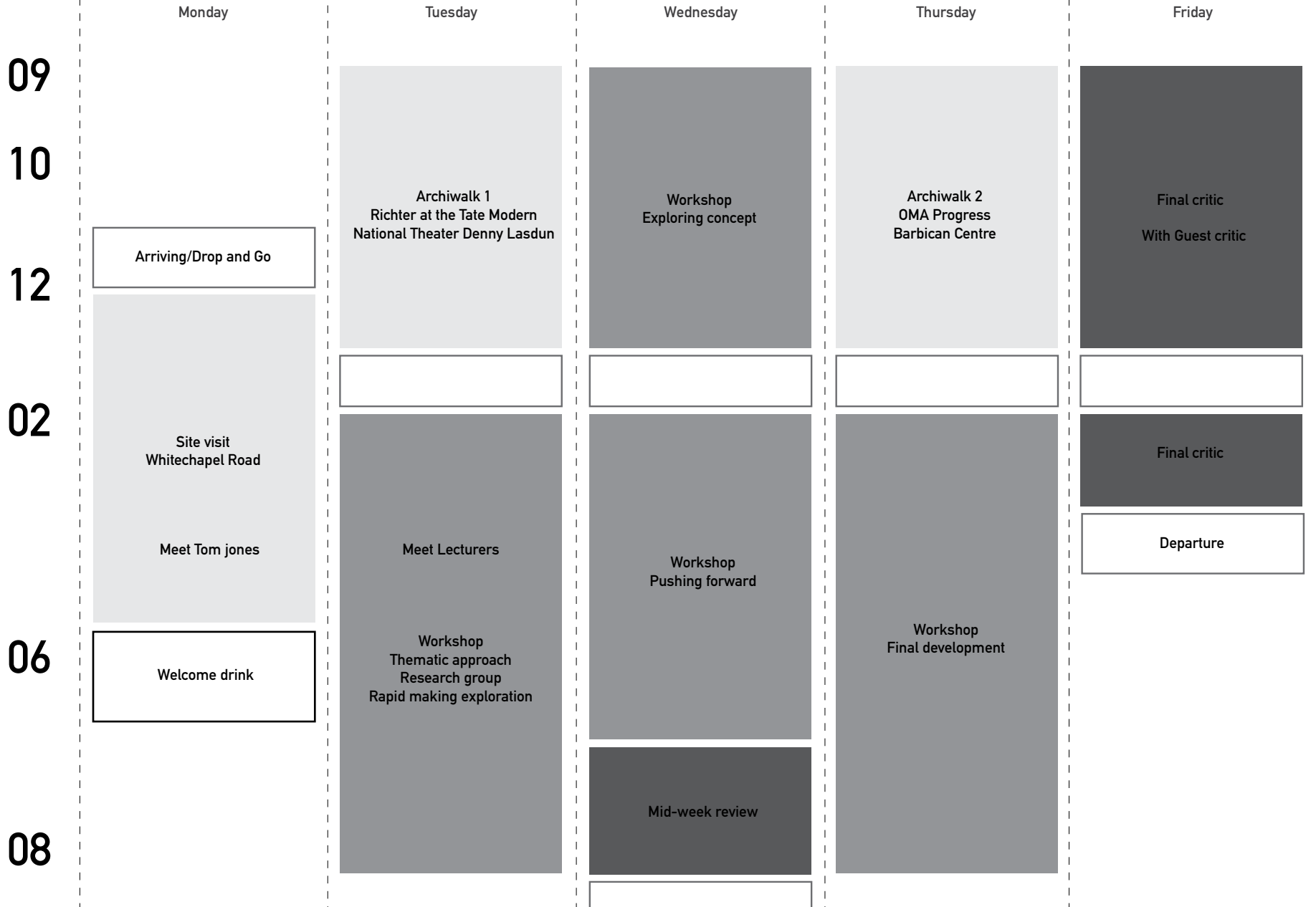
Schedule

Site visit and Tour

Workshop

Review

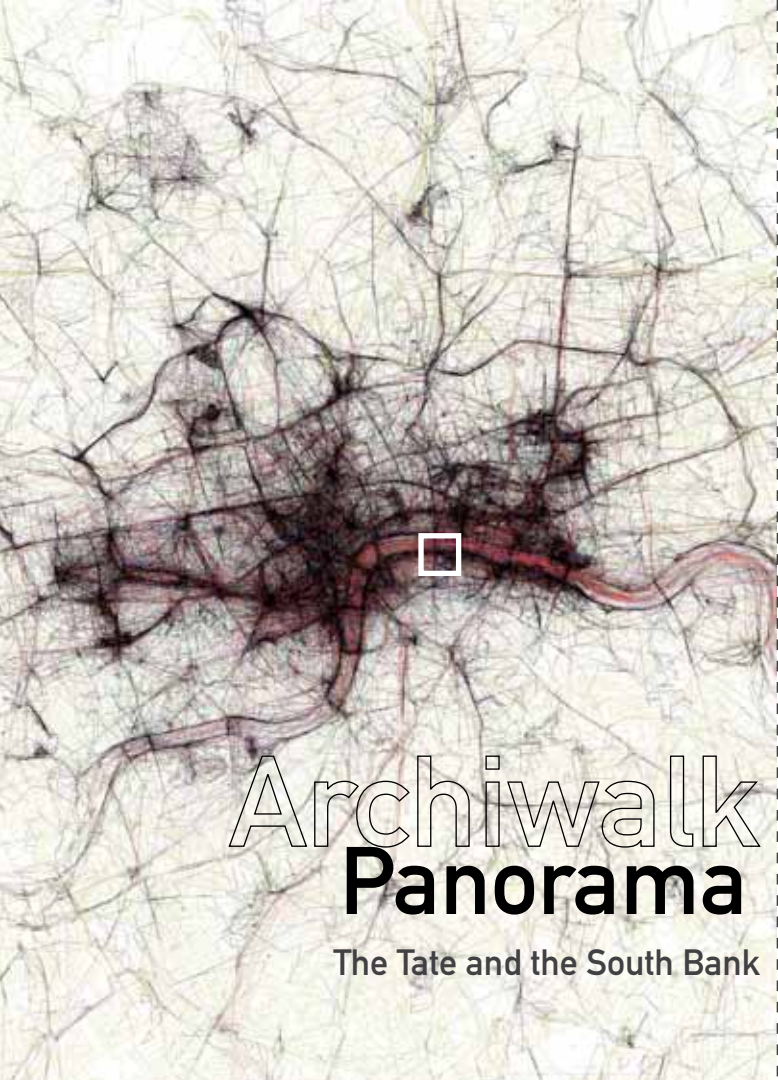
Free/Gathering



03\_Archiwalk

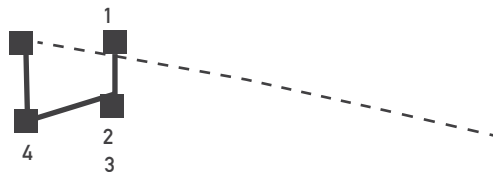
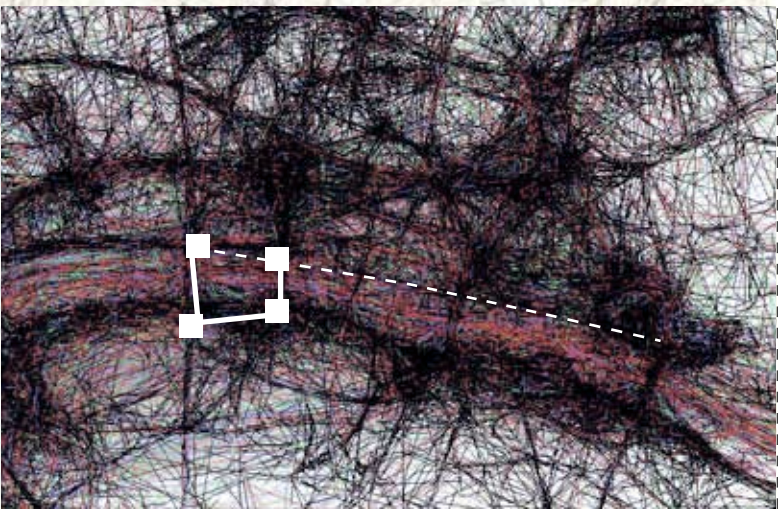
**Panorama** Richter at the Tate, National Theatre

**Barbican** OMA Progress exhibition, visit of the Barbican



# Archiwalk Panorama

The Tate and the South Bank



### 1-Meeting at Saint Paul 9.30am

Saint Paul's Cathedral is an Anglican cathedral on Ludgate Hill, the highest point in the City of London, and is the seat of the Bishop of London. The present building dates from the 17th century and was designed by Sir Christopher Wren. It is generally reckoned to be London's fifth St Paul's Cathedral, all having been built on the same site since AD 604.

### 1-Tate Modern

Tate Modern is a modern art gallery located in London, United Kingdom. It is Britain's national gallery of international modern art and forms part of the Tate group (together with Tate Britain, Tate Liverpool, Tate St Ives and Tate Online). The Turbine Hall, which once housed the electricity generators of the old power station, is five storeys tall with 3,400 square metres of floorspace. It is used to display large specially-commissioned works by contemporary artists, between October and March each year in a series sponsored by Unilever. This series was planned to last the gallery's first five years, but the popularity of the series has led to its extension until at least 2012.

### 3-Gerhard Richter: Panorama

Spanning nearly five decades, and coinciding with the artist's 80th birthday, Gerhard Richter: Panorama is a major retrospective exhibition that groups together significant moments of his remarkable career.

Since the 1960s, Gerhard Richter has immersed himself in a rich and varied exploration of painting. Gerhard Richter: Panorama highlights the full extent of the artist's work, which has encompassed a diverse range of techniques and ideas. It includes realist paintings based on photographs, colourful gestural abstractions such as the squeegee paintings, portraits, subtle landscapes and history paintings.

### 4-Lasdun National Theatre

The National Theatre building houses three separate auditoria.

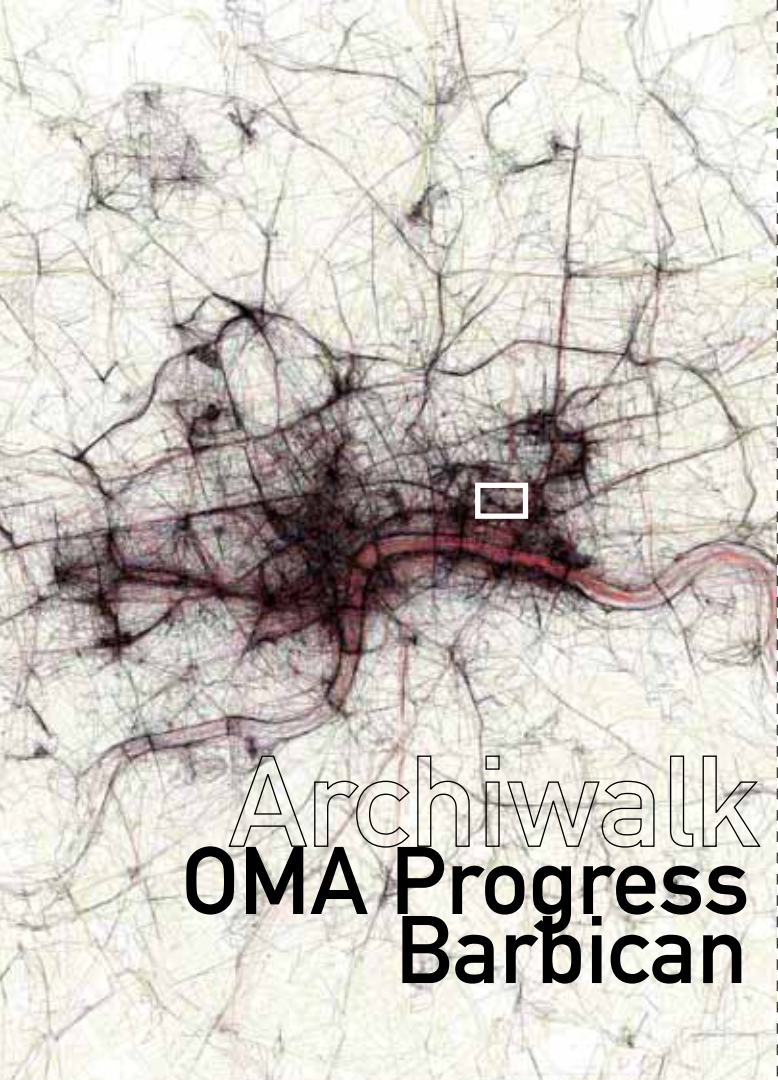
The riverside forecourt of the theatre is used for regular open-air performances in the summer months. The terraces and foyers of the theatre complex have also been used for ad hoc experimental performances. The theatre is often cited as an archetype of Brutalist architecture in England, since Lasdun's death the building has been re-evaluated as having closer links to the work of Le Corbusier, rather than contemporary monumental 1960s buildings such as those of Paul Rudolph.

### Notes :

Lunch will at student expenses before to go back to school.

Workshop restart at 2pm.

London metropolitan University  
41-47 Commercial Road  
London E1 1LA  
Tube station : Aldgate East



# Archiwalk

## OMA Progress Barbican

### 1-OMA Progress

The exhibition is curated and designed by the Belgium-based collective, Rotor. To make their portrait of OMA, Rotor have enjoyed unprecedented behind-the-scenes access and the opportunity to ask candid questions. The result is a compelling selection of materials from archives, collections and OMA-offices across the globe.

### 2-Barbican centre

The Centre had a long development period, only opening long after the surrounding Barbican Estate housing complex had been built. It is situated in an area which was badly bombed during World War II.

The Centre, designed by Chamberlin, Powell and Bon in the Brutalist style, has a complex multi-level layout with numerous entrances. Lines painted on the ground help would-be audience members avoid getting lost on the walkways of the Barbican Housing Estate on the way to the Centre. The Centre's design – a concrete ziggurat – has always been controversial and divides opinion.



### Notes :

Lunch will at student expenses before to go back to school.  
Workshop restart at 2pm.

London metropolitan University  
41-47 Commercial Road  
London E1 1LA  
Tube station : Aldgate East

04\_Workshop

Site

Brief

## CONTEXT

Our cities now have to rethink and redevelop the use of space more creatively and ingeniously than ever before. Space is precious in any context but the extra pressure cities' face with the ever growing need to accommodate increasing populations mean that every open area is now a new possibility for spatial development.

One of the most recent and fascinating is discovering Interstitial space, gaps in-between. Their appeal lies in their surprise and undiscovered disposition. Their purpose might involve a large community or an individual but because of its hidden or exposed position, providing an adventure, or unexpected experience. It provides opportunities for older established buildings to convey a new brief and therefore a new spirit, encouraging creativity and positive thinking, using a different energy.

The urban master planners and the local communities have to consider a more responsible composition of ideas to our environmental needs. Sustainable energy use and material choice are to be rewarded but how does this connect with the individual and the surroundings? What is our sensory involvement? Actions that involve breathing fresh air, feeling the breeze, hearing the cars rumble by, bathing in direct light, seem fundamentally prearranged but is the experience total? How do we make this encounter poignant and memorable?

## SITE

Whitechapel is undergoing rapid change and the already-busy area will become even more so in the coming years with the new hospital, the East London Line and the planned arrival of Crossrail.

To help Whitechapel adapt to accommodate the increased numbers of people moving through the area, the planned High Street 2012 initiatives aim to make significant improvements to Whitechapel market so that there is space to accommodate both pedestrians and market traders more effectively. The market proposals have been developed in consultation local traders. When the market is not in use, the area will be experienced as a more generous public space, with new lighting and seating.

## FRAMEWORK

### HIGH STREET 2012

High Street 2012 is an ongoing project that includes a range of public realm improvements along the A11/A118 from Aldgate to Stratford. The project aims to upgrade parts of the street from Whitechapel Road to Stratford High Street, and to provide a lasting legacy from the 2012 Games for local communities.

The project aims to create a thriving high street by re-enforcing the distinctive character of the places along the route, by creating places for people to stop, slow down and socialise and by balancing the needs of pedestrians and other road users. A cluster of historic buildings was completed in September 2010 at Aldgate. Stratford High Street public realm improvements are on site with other projects due to start in the summer of 2011.

High Street 2012 is a vision for the road that connects Aldgate to Stratford that will deliver long term and lasting improvements to transform this historic route into a world class and thriving High Street.

The vision is a starting point and much more will have to be done before the projects can be realised. Some projects will be delivered before 2012, including temporary installations and events in the build up to and during the Olympics. Four main objectives drive the vision:

vision update

# HS2012

## 1\_creating a 'high street'

Building a shared street where there is a balance between pedestrian and road uses, where all of life can be and is focused, where rich multicultural assets are revealed and celebrated, and where tourists, visitors and locals can spend time profitably and pleasurably

## 2\_creating a connected street

Ensuring that natural flows are supported and that accessibility is improved through removing barriers, improving visibility, using appropriate materials and enhancing legibility by using a clear approach to wayfinding

## 3\_creating a healthy street

Attaining a healthy street by encouraging cycling and walking, flagging up links to sport and leisure, encouraging healthy eating. Greening the street and using sustainable materials.

## 4\_celebrating the street

Reflecting the distinct social, cultural and historical aspects of the street and supporting live community projects

aldgate  
whitechapel  
stepney green  
mile end  
bow road  
stratford

## visionary street projects

The objectives will be met by six layers of intervention that apply to the whole street (see below) and through eight site specific projects. (see overleaf).

### cycleway & new surfaces

Forming a new cycle corridor and improving the material quality of the street

### wayfinding

Devising way-finding measures using site specific interventions and signage

### lighting strategy

Defining a unified system for lighting the high street's carriageways and pavements, historical assets, special spaces and elements of its way-finding strategy

### de-cluttering

Improving the street's visual appeal by removing unused signage, railings & furniture

### green thread

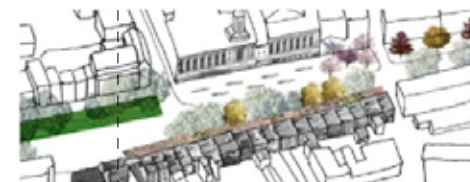
To thread the street with new and improved green spaces that reflect local character; including tree planting, green walls and roofs and gardens.

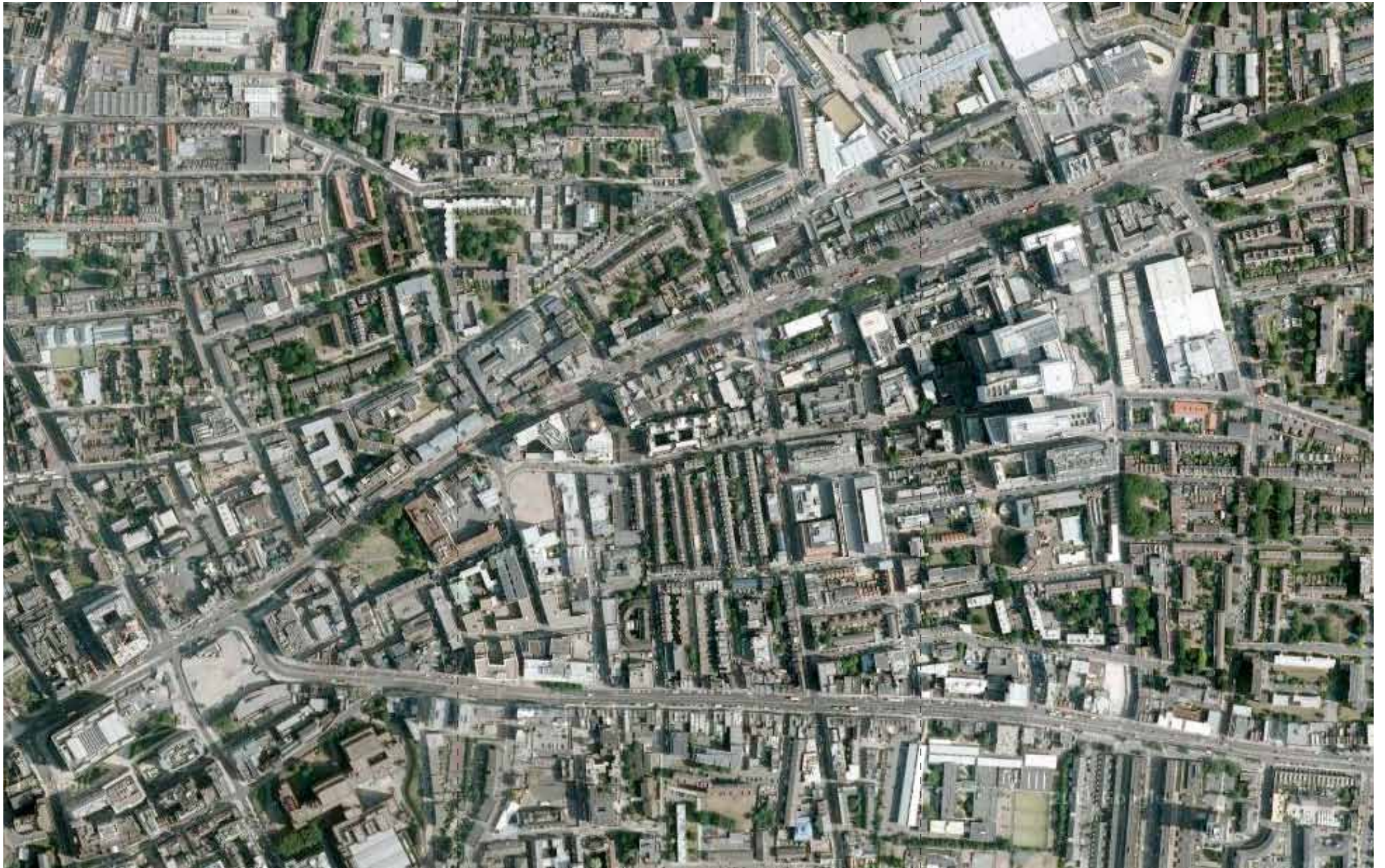
### community projects

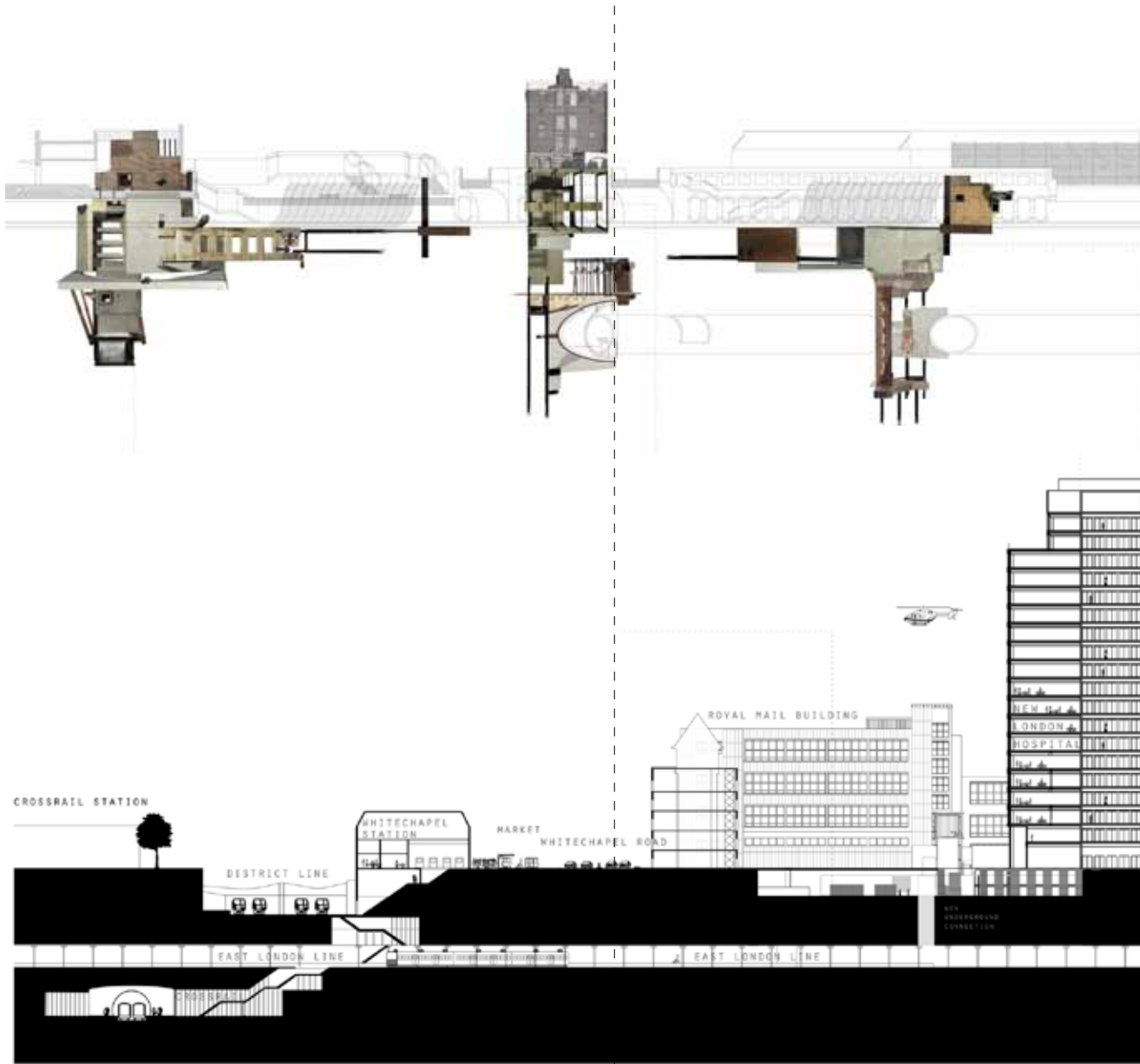
Keeping the community involved in delivering the High Street 2012 project



artist impression of whitechapel area







Michael Griffiths, AA project

## BRIEF

Devise an intervention to engage the local community within the Aldgate area, with a view to developing connections between the dynamic cultural and sociological demographics. The location is a perceived HIDDEN SPACE within the existing landscape of Whitechapel High Street. The solution should offer opportunities of new perspectives of trading, within Tower Hamlets.

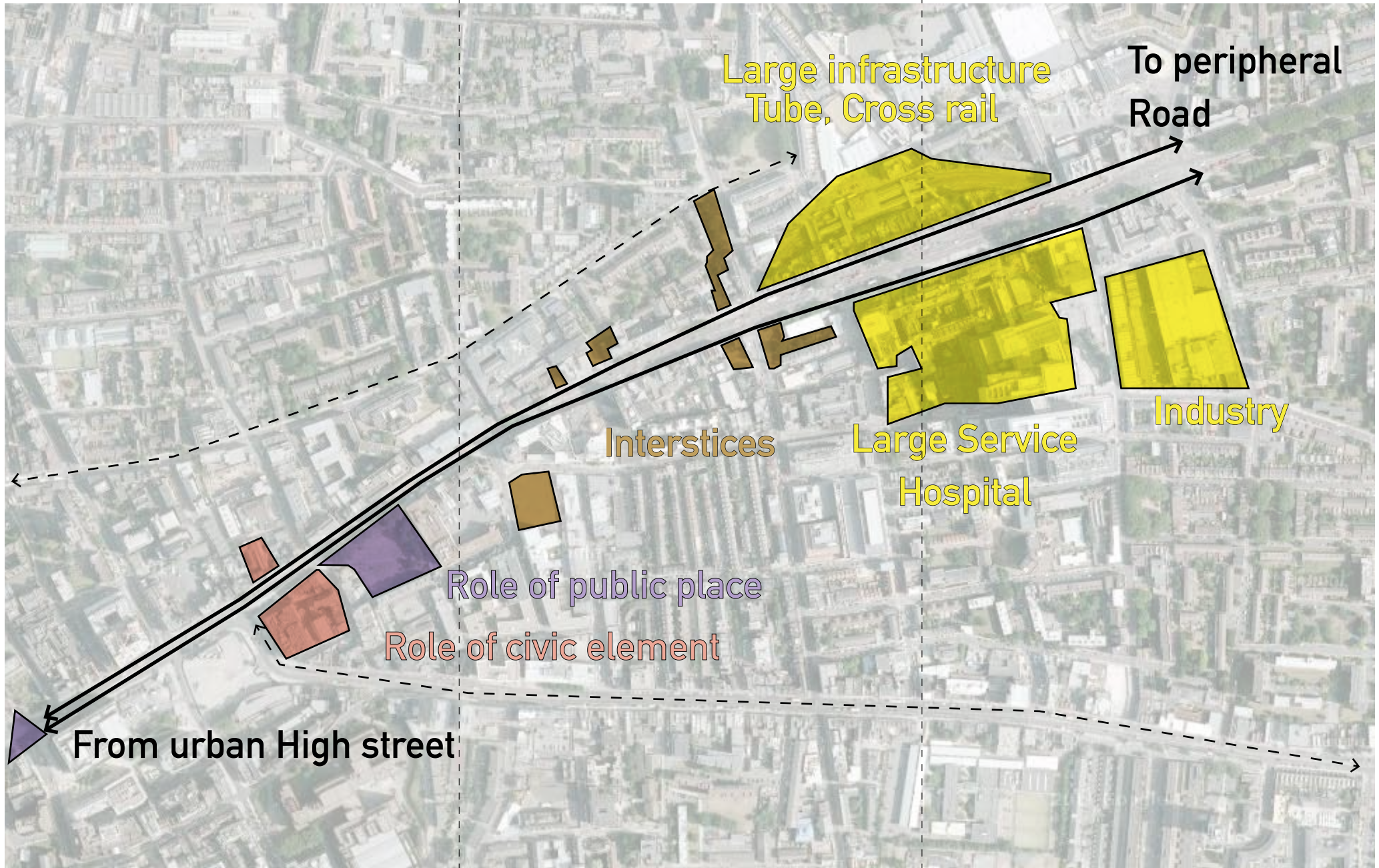
Design a structures/ installation within an interstitial space within an urban context

Through sensory connections and architectural motives create a connection between the viewer and the landscape.

Consider and plan the possible journeys, way finding and advertising to encourage engagement with each site.

Consider the orientation, the high perspective and the weather to add theatre, purpose, light and shadow to the structure.

The function and facility within the design should be derived from the individual research findings



Large infrastructure  
Tube, Cross rail

To peripheral  
Road

Interstices

Large Service  
Hospital

Industry

Role of public place

Role of civic element

From urban High street

## THEMES

If we were trying to call into question the different spatial qualities of the street and the challenge that may appear, we could identify five themes. All these themes have a rich genealogy of issues dealing with areas transforming from peripheral site into one more urban.

### 1 - From High street to Peripheral Road.

It is obvious that the street shape itself is moving from one that is urban with shops, tree canopy, tight profile to one larger, a degradation of services, interrupted with large infrastructure. However, everyday user of the upper part have somehow turn into advantages the mutation of the profile with a large open air market happening twice a week.

How spatial strategy - from way finding to punctual installation - could redefine a coherent identity of the overall street?  
How informal behaviour could be transform into a more permanent architectural response?

### 2- Large infrastructure

These mega-forms are taking a large portion of the street front, going deep inside the block but most interestingly in the case of a transportation system, going deep inside the ground. In general, they are bringing several urban issues with regard of there monofunctionality, the critical mass they gather inside the built and not in the street. However, they are also ones that could deeply redefine our understanding of this changing peripheral site if ones could find ways to reintegrate them to the social tissue. This could range from a facade treatment, a better porosity of the ground, an addition of new public function. This has to do mainly with a closer look at the thickened ground they could constitute, a new way of redrawing the sectional sequence of the street.

### 3 - Interstices

The middle section of the street could be mainly define by its interstices. It is also due to the fact that a street never operates alone and is always support by parallel vectors and transversal that create the urban grid.

How could we take advantage of this condition to bring added value to the area by staking, plugging, running along those hidden spaces?

### 4- The role of public space

Urban piazza and urban park are too often in cities overlooked. They are considered the archetypal public space to gather. However, the two conditions present along whitechapel road are bringing further evidence to requestion this type of public space.

One is a park that could perform better in term of social catalyst if the question of green spaces in urban area was approached more subversively.

The second is an empty hard surface at the junction of an intense cross road. This space call into question the role of potential iconicity because of its location. Recent competition have seen a neighbour site in Aldgate becoming a new temporary Landmark for the area during the Olympic Games. This was to create an awareness of the redevelopment of the East. However, it is also our role to question the role of architectural intervention and the sign they generate.

### 5- The role of Civic elements

University, Art Gallery, Foundation bring civic drivers that are often an appealing tool to revitalize an urban area. The civic role of the Wellcome Trust foundation on Euston Road is a fair example of proposing new public spaces on a busy corridor. In the case of whitechapel road, we could call into question the role of an University of Art in the redefinition a social tissue.

These are only proposals of framework where students will decide for themselves to follow one problematic or form there own narrative to tackle there projects.



# Useful Links Credits

Cover: Billboard, Lead pencil Studio  
Cartography : Erick Gaeser  
Workshop brochure: Jerome Picard

## Government

[www.london.gov.uk/thelondonplan](http://www.london.gov.uk/thelondonplan) - GLA The London Plan

[www.cityoflondon.gov.uk](http://www.cityoflondon.gov.uk) - Corporation of London

[www.tfl.gov.uk](http://www.tfl.gov.uk) Transport for London

[www.cabe.org.uk](http://www.cabe.org.uk) - Commission for Architecture and the Built Environment

<http://neighbourhood.statistics.gov.uk/> - Office of National Statistics

[www.sd-commission.org.uk](http://www.sd-commission.org.uk) - Sustainable Development Commission:

<http://www.communities.gov.uk/corporate/> - Homes and Communities Agency

## Resources + research

[www.newlondonarchitecture.org](http://www.newlondonarchitecture.org) - New London Architecture

[www.ajplus.co.uk](http://www.ajplus.co.uk) - Architects' Journal magazine

[www.tomorrowsthoughtstoday.com](http://www.tomorrowsthoughtstoday.com) - Tomorrows Thoughts Today thinktank

<http://thisisnotagateway.squarespace.com> - This is not a gateway - urban dialogues

<http://www.planninginlondon.com/> - Planning in London magazine

[www.architecturefoundation.org.uk](http://www.architecturefoundation.org.uk) - Architecture Foundation

[www.buildingfutures.org.uk/](http://www.buildingfutures.org.uk/) - Building Futures

[www.udg.org.uk](http://www.udg.org.uk) - Urban Design Group

[www.urbanbuzz.org](http://www.urbanbuzz.org) - Urban Buzz research project UCL.

<http://www.gigateway.org.uk/> - Gigateway mapping.

## About the site

<http://www.highstreet2012.com/projects/area-initiatives/aldgate/historic-buildings-aldgate>

<http://www.towerhamlets.gov.uk/>

<http://www.elba-1.org.uk/>

# Hidden Space Day 1 12/12/2011

Site visit/Lecture by Tom Jones and Jerome  
Picard/Team introduction at the MET  
Follow us on <http://hiddenspacewhitechapel.blogspot.com>



Arriving at Whitechapel Station



Daily market



One of the interstices, potential site



Disused railway, potential site



Presentation of the High Street 2012 project and the Stratford Site



High Street 2012



The French team



Program Presentation

